

# LYNCHBURG DISTRICT

## LYNCHBURG DISTRICT

App #	Project Name	District Rank	State Rank	Smart Score	Page #
1371	Arnett Boulevard Improvements	1	7	91.4	05-16
1087	US 460/VA 626 Intersection (Prospect)	2	10	79.6	05-02
1448	Route 29/151 Safety Improvement	3	33	31.4	05-18
1347	Mt. Cross Rd./Whitmell School Rd. Intersection Improvements	4	86	8.8	05-11
1054	Route 15 & 360 Roundabout	5	87	8.7	05-01
1676	Columbia Road (690) and Cartersville Road (45)	6	109	6.9	05-27
1495	Old Courthouse Road Improvement Project	7	129	5.6	05-23
1370	Kentuck Road Improvements	8	149	3.8	05-15
1136	US 501/Route 628 Intersection	9	156	3.6	05-04
1354	Mount Cross Road/Mill Creek Road Safety Improvements	10	161	3.5	05-12
1500	Berry Hill Road Improvements	11	186	2.9	05-25
1483	RTE 221 - INTERSECTION IMPROVEMENTS.	12	215	2.2	05-21
1357	Route 29 Access Management	13	222	2.1	05-13
1283	Route 501 Passing Lanes	14	236	1.9	05-10
1417	South Main/Milnwood Road Intersection Safety Improvements	15	237	1.8	05-17
1155	Route 751 Improvements	16	240	1.7	05-06
1261	Lynch Mill / Clarion Road Intersection Improvements	17	247	1.6	05-08
1142	US 58/Route 751 Intersection	18	262	1.4	05-05
1281	Route 622, Lynbrook Road	19	263	1.3	05-09
1358	Route 6/151 Intersection	20	267	1.2	05-14
1499	Route 40 and McBride Lane Intersection Improvements	21	317	0.7	05-24
1492	Town of Halifax	22	319	0.6	05-22
1460	Rt.15 Southbound at Rt. 617 (Gravel Hill Rd.)	23	333	0.5	05-19
1681	Route 60 and Route 13 Intersection Improvement	24	347	0.4	05-28
1611	Hamilton Blvd. Corridor Improvements	25	363	0.3	05-26
1482	Route 29 Median Barrier Replacement	26	382	0.2	05-20
1259	Altavista Elementary School Transportation Improvements	27	392	0	05-07
1134	US 460 Interchange	28	400	0	05-03

# PROJECT SCORECARD

For more information on how to read a scorecard, click here.

Route 15 & 360 Roundabout

App Id: 1054

Safety improvements at the U.S. 360 and 15 Intersection to include roundabout concept.

Project Location..... Charlotte County  
 SMART SCALE Area Type..... D  
 Submitting Entity..... Charlotte County  
 Preliminary Engineering..... Not Started  
 Right of Way..... Not Started  
 Construction..... Not Started  
 Expenditures to Date..... N/A  
 Key Fund Sources..... N/A  
 Administered By..... VDOT  
 Eligible Funding Program(s)..... District Grant  
 VTrans Need..... Safety: Crash History and Geometric Issue  
 ( Click for details )



<b>8.7</b> SMART SCALE SCORE	<b>#87</b> OF 404 STATEWIDE
	<b>#5</b> OF 28 DISTRICTWIDE

SMART SCALE Requested Funds..... **\$7,514,634**  
 Total Project Cost..... **\$7,514,634**  
 Project Benefit..... **6.6**  
 Project Benefit / Total Cost..... **8.7**

Factor	Congestion Mitigation		Safety		Accessibility			Economic Development			Environment		Land Use
	Increase in Peak Period Person Throughput	Reduction in Peak Period Delay	Reduction in Fatal and Injury Crashes	Reduction in Fatal and Injury Crash Rate	Increase in Access to Jobs	Increase in Access to Jobs for Disadvantaged Populations	Increase in Access to Multimodal Travel Choices	Square Feet of Commercial/Industrial Development Supported	Tons of Goods Impacted	Improvement to Travel Time Reliability	Potential to Improve Air Quality	Other Factor Values Scaled by Potential Acreage Impacted	Support of Transportation-Efficient Land Development
Measure Value	0.0 persons	1.1 person hrs.	10.4 EPDO	3,678.3 EPDO / 100M VMT	0.0 jobs per resident	0.0 jobs per resident	0.0 adjusted users	3,628,350.0 thousand adj sq. ft.	0.0 thousand adj daily tons	23,891.7 adj. buffer time index	0.0 adjusted points	5.4 scaled points	adjusted jobs & pop.
Normalized Measure Value (0-100)	0.0	0.0	3.2	19.0	0.0	0.0	0.0	12.9	0.0	0.0	0.0	10.4	
Measure Weight (% of Factor)	50%	50%	50%	50%	60%	20%	20%	60%	20%	20%	50%	50%	N/A
Factor Value	0.0		11.1		0.0			7.7			5.2		0.0
Factor Weight (% of Project Score)	10%		30%		15%			35%			10%		N/A
Weighted Factor Value	0.0		3.3		0.0			2.7			0.5		
Project Benefit	6.6												
SMART SCALE Cost	\$7,514,634												
SMART SCALE Score (Project Benefit per \$10M SMART SCALE Cost)	<b>8.7</b>												

# PROJECT SCORECARD

For more information on how to read a scorecard, click here.

US 460/VA 626 Intersection (Prospect)

App Id: 1087

Intersection improvements to install dynamic flashers to improve safety. This is the main intersection at Prospect and has been recommended by VDOT staff for a number of years for "Safety Improvements" and has a high accident history.

Project Location..... Prince Edward County  
 SMART SCALE Area Type..... D  
 Submitting Entity..... Prince Edward County  
 Preliminary Engineering..... Not Started  
 Right of Way..... Not Needed  
 Construction..... Not Started  
 Expenditures to Date..... N/A  
 Key Fund Sources..... N/A  
 Administered By..... VDOT  
 Eligible Funding Program(s)..... Both  
 VTrans Need..... Heartland Corridor CoSS  
 ( Click for details )



<h1>79.6</h1> <p>SMART SCALE SCORE</p>	<h2>#10</h2> <p>OF 404 STATEWIDE</p>
	<h2>#2</h2> <p>OF 28 DISTRICTWIDE</p>

SMART SCALE Requested Funds..... **\$216,955**  
 Total Project Cost..... **\$216,955**  
 Project Benefit..... **1.7**  
 Project Benefit / Total Cost..... **79.6**

Factor	Congestion Mitigation		Safety		Accessibility			Economic Development			Environment		Land Use
	Increase in Peak Period Person Throughput	Reduction in Peak Period Delay	Reduction in Fatal and Injury Crashes	Reduction in Fatal and Injury Crash Rate	Increase in Access to Jobs	Increase in Access to Jobs for Disadvantaged Populations	Increase in Access to Multimodal Travel Choices	Square Feet of Commercial/Industrial Development Supported	Tons of Goods Impacted	Improvement to Travel Time Reliability	Potential to Improve Air Quality	Other Factor Values Scaled by Potential Acreage Impacted	Support of Transportation-Efficient Land Development
Measure Value	0.0 persons	0.0 person hrs.	6.0 EPDO	1,708.2 EPDO / 100M VMT	0.0 jobs per resident	0.0 jobs per resident	0.0 adjusted users	0.0 thousand adj sq. ft.	0.0 thousand adj daily tons	17,416.4 adj. buffer time index	0.0 adjusted points	1.3 scaled points	adjusted jobs & pop.
Normalized Measure Value (0-100)	0.0	0.0	1.8	8.8	0.0	0.0	0.0	0.0	0.0	0.0	0.0	2.6	
Measure Weight (% of Factor)	50%	50%	50%	50%	60%	20%	20%	60%	20%	20%	50%	50%	N/A
Factor Value	0.0		5.3		0.0			0.0			1.3		0.0
Factor Weight (% of Project Score)	10%		30%		15%			35%			10%		N/A
Weighted Factor Value	0.0		1.6		0.0			0.0			0.1		
Project Benefit	1.7												
SMART SCALE Cost	\$216,955												
SMART SCALE Score (Project Benefit per \$10M SMART SCALE Cost)	<b>79.6</b>												

# PROJECT SCORECARD

For more information on how to read a scorecard, click here.

US 460 Interchange

App Id: 1134

Propose the build-out of the US 460 interchange east of the Town of Farmville

Project Location..... Prince Edward County  
 SMART SCALE Area Type..... D  
 Submitting Entity..... Prince Edward County  
 Preliminary Engineering..... Not Started  
 Right of Way..... Not Started  
 Construction..... Not Started  
 Expenditures to Date..... N/A  
 Key Fund Sources..... N/A  
 Administered By..... VDOT  
 Eligible Funding Program(s)..... Both  
 VTrans Need..... Heartland Corridor CoSS  
 ( Click for details )



<h1>0.0</h1> <p>SMART SCALE SCORE</p>	<h2>#400</h2> <p>OF 404 STATEWIDE</p>
	<h2>#28</h2> <p>OF 28 DISTRICTWIDE</p>

SMART SCALE Requested Funds..... **\$10,505,553**  
 Total Project Cost..... **\$10,505,553**  
 Project Benefit..... **0.0**  
 Project Benefit / Total Cost..... **0.0**

Factor	Congestion Mitigation		Safety		Accessibility			Economic Development			Environment		Land Use
	Increase in Peak Period Person Throughput	Reduction in Peak Period Delay	Reduction in Fatal and Injury Crashes	Reduction in Fatal and Injury Crash Rate	Increase in Access to Jobs	Increase in Access to Jobs for Disadvantaged Populations	Increase in Access to Multimodal Travel Choices	Square Feet of Commercial/Industrial Development Supported	Tons of Goods Impacted	Improvement to Travel Time Reliability	Potential to Improve Air Quality	Other Factor Values Scaled by Potential Acreage Impacted	Support of Transportation-Efficient Land Development
Measure Value	0.0 persons	0.0 person hrs.	0.0 EPDO	0.0 EPDO / 100M VMT	0.0 jobs per resident	0.0 jobs per resident	0.0 adjusted users	0.0 thousand adj sq. ft.	0.0 thousand adj daily tons	111,280.6 adj. buffer time index	0.0 adjusted points	0.0 scaled points	adjusted jobs & pop.
Normalized Measure Value (0-100)	0.0	0.0	0.0	0.0	0.0	0.0	0.0	0.0	0.0	0.0	0.0	0.0	
Measure Weight (% of Factor)	50%	50%	50%	50%	60%	20%	20%	60%	20%	20%	50%	50%	N/A
Factor Value	0.0		0.0		0.0			0.0			0.0		0.0
Factor Weight (% of Project Score)	10%		30%		15%			35%			10%		N/A
Weighted Factor Value	0.0		0.0		0.0			0.0			0.0		
Project Benefit	0.0												
SMART SCALE Cost	\$10,505,553												
SMART SCALE Score (Project Benefit per \$10M SMART SCALE Cost)	<b>0.0</b>												



# PROJECT SCORECARD

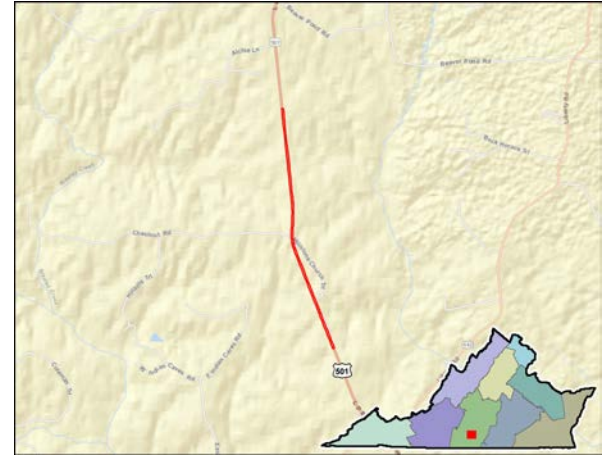
For more information on how to read a scorecard, click here.

US 501/Route 628 Intersection

App Id: 1136

Intersection improvement as US Route 501 and Route 628

Project Location..... Halifax County  
 SMART SCALE Area Type..... D  
 Submitting Entity..... Halifax County  
 Preliminary Engineering..... Not Started  
 Right of Way..... Not Started  
 Construction..... Not Started  
 Expenditures to Date..... N/A  
 Key Fund Sources..... N/A  
 Administered By..... VDOT  
 Eligible Funding Program(s)..... District Grant  
 VTrans Need..... Safety: Geometric Issue  
 ( Click for details )



<h1>3.6</h1> <p>SMART SCALE SCORE</p>	<h2>#156</h2> <p>OF 404 STATEWIDE</p>
	<h2>#9</h2> <p>OF 28 DISTRICTWIDE</p>

SMART SCALE Requested Funds..... **\$4,192,835**  
 Total Project Cost..... **\$4,192,835**  
 Project Benefit..... **1.5**  
 Project Benefit / Total Cost..... **3.6**

Factor	Congestion Mitigation		Safety		Accessibility			Economic Development			Environment		Land Use
	Increase in Peak Period Person Throughput	Reduction in Peak Period Delay	Reduction in Fatal and Injury Crashes	Reduction in Fatal and Injury Crash Rate	Increase in Access to Jobs	Increase in Access to Jobs for Disadvantaged Populations	Increase in Access to Multimodal Travel Choices	Square Feet of Commercial/Industrial Development Supported	Tons of Goods Impacted	Improvement to Travel Time Reliability	Potential to Improve Air Quality	Other Factor Values Scaled by Potential Acreage Impacted	Support of Transportation-Efficient Land Development
Measure Value	0.0 persons	0.0 person hrs.	2.1 EPDO	1,624.4 EPDO / 100M VMT	0.4 jobs per resident	0.4 jobs per resident	0.0 adjusted users	0.0 thousand adj sq. ft.	4,578.8 thousand adj daily tons	16,806.6 adj. buffer time index	37.8 adjusted points	1.3 scaled points	adjusted jobs & pop.
Normalized Measure Value (0-100)	0.0	0.0	0.6	8.4	0.0	0.0	0.0	0.0	0.3	0.0	0.2	2.6	
Measure Weight (% of Factor)	50%	50%	50%	50%	60%	20%	20%	60%	20%	20%	50%	50%	N/A
Factor Value	0.0		4.5		0.0			0.1			1.4		0.0
Factor Weight (% of Project Score)	10%		30%		15%			35%			10%		N/A
Weighted Factor Value	0.0		1.4		0.0			0.0			0.1		
Project Benefit	1.5												
SMART SCALE Cost	\$4,192,835												
SMART SCALE Score (Project Benefit per \$10M SMART SCALE Cost)	<b>3.6</b>												

# PROJECT SCORECARD

For more information on how to read a scorecard, click here.

US 58/Route 751 Intersection

App Id: 1142

## IMPROVEMENTS TO THE US 58 AND ROUTE 751 INTERSECTION - PHASE #1

Project Location..... Halifax County  
 SMART SCALE Area Type..... D  
 Submitting Entity..... Halifax County  
 Preliminary Engineering..... Not Started  
 Right of Way..... Not Started  
 Construction..... Not Started  
 Expenditures to Date..... N/A  
 Key Fund Sources..... N/A  
 Administered By..... VDOT  
 Eligible Funding Program(s)..... District Grant  
 VTrans Need..... Safety: PSI Data and Geometric Issue  
 ( Click for details )



<h1>1.4</h1> <p>SMART SCALE SCORE</p>	<h2>#262</h2> <p>OF 404 STATEWIDE</p>
	<h2>#18</h2> <p>OF 28 DISTRICTWIDE</p>

SMART SCALE Requested Funds..... **\$7,193,811**  
 Total Project Cost..... **\$7,193,811**  
 Project Benefit..... **1.0**  
 Project Benefit / Total Cost..... **1.4**

Factor	Congestion Mitigation		Safety		Accessibility			Economic Development			Environment		Land Use
	Increase in Peak Period Person Throughput	Reduction in Peak Period Delay	Reduction in Fatal and Injury Crashes	Reduction in Fatal and Injury Crash Rate	Increase in Access to Jobs	Increase in Access to Jobs for Disadvantaged Populations	Increase in Access to Multimodal Travel Choices	Square Feet of Commercial/Industrial Development Supported	Tons of Goods Impacted	Improvement to Travel Time Reliability	Potential to Improve Air Quality	Other Factor Values Scaled by Potential Acreage Impacted	Support of Transportation-Efficient Land Development
Measure Value	0.0 persons	0.0 person hrs.	3.0 EPDO	956.0 EPDO / 100M VMT	0.0 jobs per resident	0.0 jobs per resident	0.0 adjusted users	0.0 thousand adj sq. ft.	0.0 thousand adj daily tons	42,361.8 adj. buffer time index	104.4 adjusted points	0.9 scaled points	adjusted jobs & pop.
Normalized Measure Value (0-100)	0.0	0.0	0.9	4.9	0.0	0.0	0.0	0.0	0.0	0.0	0.6	1.7	
Measure Weight (% of Factor)	50%	50%	50%	50%	60%	20%	20%	60%	20%	20%	50%	50%	N/A
Factor Value	0.0		2.9		0.0			0.0			1.1		0.0
Factor Weight (% of Project Score)	10%		30%		15%			35%			10%		N/A
Weighted Factor Value	0.0		0.9		0.0			0.0			0.1		
Project Benefit	1.0												
SMART SCALE Cost	\$7,193,811												
SMART SCALE Score (Project Benefit per \$10M SMART SCALE Cost)	1.4												

# PROJECT SCORECARD

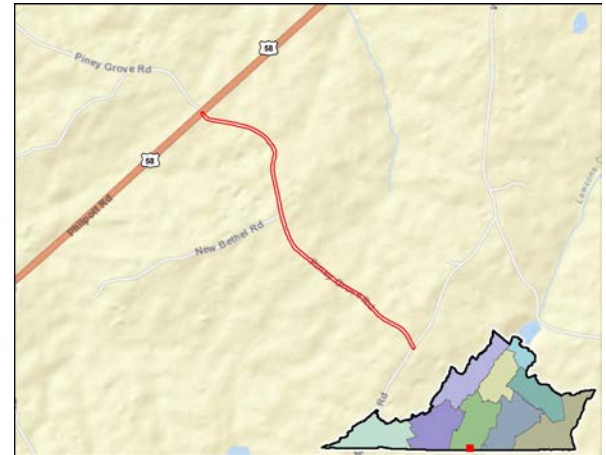
For more information on how to read a scorecard, click here.

Route 751 Improvements

App Id: 1155

ROADWAY IMPROVEMENT ON ROUTE 751 FROM US58 TO ROUTE 699 (PHASE #2)

Project Location..... Halifax County  
 SMART SCALE Area Type..... D  
 Submitting Entity..... Halifax County  
 Preliminary Engineering..... Not Started  
 Right of Way..... Not Started  
 Construction..... Not Started  
 Expenditures to Date..... N/A  
 Key Fund Sources..... N/A  
 Administered By..... VDOT  
 Eligible Funding Program(s)..... District Grant  
 VTrans Need..... Safety: PSI Data and Geometric Issue  
 ( Click for details )



<h1>1.7</h1> <p>SMART SCALE SCORE</p>	<h2>#240</h2> <p>OF 404 STATEWIDE</p>
	<h2>#16</h2> <p>OF 28 DISTRICTWIDE</p>

SMART SCALE Requested Funds..... **\$7,344,445**  
 Total Project Cost..... **\$7,344,445**  
 Project Benefit..... **1.3**  
 Project Benefit / Total Cost..... **1.7**

Factor	Congestion Mitigation		Safety		Accessibility			Economic Development			Environment		Land Use
	Increase in Peak Period Person Throughput	Reduction in Peak Period Delay	Reduction in Fatal and Injury Crashes	Reduction in Fatal and Injury Crash Rate	Increase in Access to Jobs	Increase in Access to Jobs for Disadvantaged Populations	Increase in Access to Multimodal Travel Choices	Square Feet of Commercial/Industrial Development Supported	Tons of Goods Impacted	Improvement to Travel Time Reliability	Potential to Improve Air Quality	Other Factor Values Scaled by Potential Acreage Impacted	Support of Transportation-Efficient Land Development
Measure Value	0.0 persons	0.0 person hrs.	5.4 EPDO	1,155.0 EPDO / 100M VMT	0.7 jobs per resident	0.7 jobs per resident	0.0 adjusted users	0.0 thousand adj sq. ft.	0.0 thousand adj daily tons	0.0 adj. buffer time index	1.2 adjusted points	1.1 scaled points	adjusted jobs & pop.
Normalized Measure Value (0-100)	0.0	0.0	1.6	6.0	0.0	0.0	0.0	0.0	0.0	0.0	0.0	2.1	
Measure Weight (% of Factor)	50%	50%	50%	50%	60%	20%	20%	60%	20%	20%	50%	50%	N/A
Factor Value	0.0		3.8		0.0			0.0			1.1		0.0
Factor Weight (% of Project Score)	10%		30%		15%			35%			10%		N/A
Weighted Factor Value	0.0		1.1		0.0			0.0			0.1		
Project Benefit	1.3												
SMART SCALE Cost	\$7,344,445												
SMART SCALE Score (Project Benefit per \$10M SMART SCALE Cost)	1.7												



# PROJECT SCORECARD

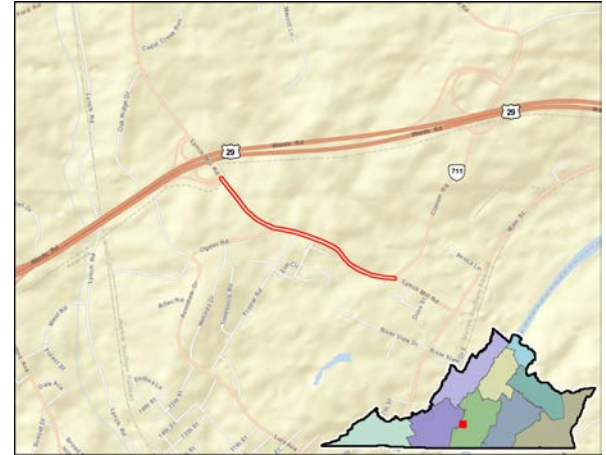
For more information on how to read a scorecard, click here.

Altavista Elementary School Transportation Improvements

App Id: 1259

Turn Lane improvements on Lynch Mill Road to better assist school bus movements to include closure of main school entrance. Construction of new access road adjacent to school to serve as main access and to better assist student drop off and pick up.

Project Location..... Altavista  
 SMART SCALE Area Type..... D  
 Submitting Entity..... Altavista Town  
 Preliminary Engineering..... Not Started  
 Right of Way..... Not Started  
 Construction..... Not Started  
 Expenditures to Date..... N/A  
 Key Fund Sources..... N/A  
 Administered By..... VDOT  
 Eligible Funding Program(s)..... District Grant  
 VTrans Need..... Safety: Crash History and Geometric Issue  
 ( Click for details )



<h1>0.0</h1> <p>SMART SCALE SCORE</p>	<h2>#392</h2> <p>OF 404 STATEWIDE</p>
	<h2>#27</h2> <p>OF 28 DISTRICTWIDE</p>

SMART SCALE Requested Funds..... **\$2,257,344**  
 Total Project Cost..... **\$2,257,344**  
 Project Benefit..... **0.0**  
 Project Benefit / Total Cost..... **0.0**

Factor	Congestion Mitigation		Safety		Accessibility			Economic Development			Environment		Land Use
	Increase in Peak Period Person Throughput	Reduction in Peak Period Delay	Reduction in Fatal and Injury Crashes	Reduction in Fatal and Injury Crash Rate	Increase in Access to Jobs	Increase in Access to Jobs for Disadvantaged Populations	Increase in Access to Multimodal Travel Choices	Square Feet of Commercial/Industrial Development Supported	Tons of Goods Impacted	Improvement to Travel Time Reliability	Potential to Improve Air Quality	Other Factor Values Scaled by Potential Acreage Impacted	Support of Transportation-Efficient Land Development
Measure Value	0.0 persons	0.3 person hrs.	0.0 EPDO	0.0 EPDO / 100M VMT	0.1 jobs per resident	0.1 jobs per resident	0.0 adjusted users	0.0 thousand adj sq. ft.	2,306.6 thousand adj daily tons	0.0 adj. buffer time index	0.0 adjusted points	0.0 scaled points	adjusted jobs & pop.
Normalized Measure Value (0-100)	0.0	0.0	0.0	0.0	0.0	0.0	0.0	0.0	0.1	0.0	0.0	0.0	
Measure Weight (% of Factor)	50%	50%	50%	50%	60%	20%	20%	60%	20%	20%	50%	50%	N/A
Factor Value	0.0		0.0		0.0			0.0			0.0		0.0
Factor Weight (% of Project Score)	10%		30%		15%			35%			10%		N/A
Weighted Factor Value	0.0		0.0		0.0			0.0			0.0		
Project Benefit	0.0												
SMART SCALE Cost	\$2,257,344												
SMART SCALE Score (Project Benefit per \$10M SMART SCALE Cost)	<b>0.0</b>												

# PROJECT SCORECARD

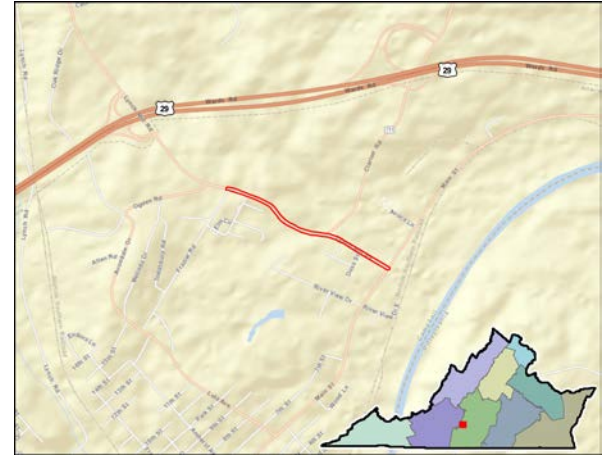
For more information on how to read a scorecard, click here.

Lynch Mill / Clarion Road Intersection Improvements

App Id: 1261

Mid-term realign intersection with roadway widening to accommodate appropriate turn lanes on all approaches. Intersection improvements to consist of the construction of a roundabout.

Project Location..... Altavista  
 SMART SCALE Area Type..... D  
 Submitting Entity..... Altavista Town  
 Preliminary Engineering..... Not Started  
 Right of Way..... Not Started  
 Construction..... Not Started  
 Expenditures to Date..... N/A  
 Key Fund Sources..... N/A  
 Administered By..... VDOT  
 Eligible Funding Program(s)..... Both  
 VTrans Need..... Cental Virginia Regional Network  
 ( Click for details )



<h1>1.6</h1> <p>SMART SCALE SCORE</p>	<h2>#247</h2> <p>OF 404 STATEWIDE</p>
	<h2>#17</h2> <p>OF 28 DISTRICTWIDE</p>

SMART SCALE Requested Funds..... **\$5,432,185**  
 Total Project Cost..... **\$5,432,185**  
 Project Benefit..... **0.9**  
 Project Benefit / Total Cost..... **1.6**

Factor	Congestion Mitigation		Safety		Accessibility			Economic Development			Environment		Land Use
	Increase in Peak Period Person Throughput	Reduction in Peak Period Delay	Reduction in Fatal and Injury Crashes	Reduction in Fatal and Injury Crash Rate	Increase in Access to Jobs	Increase in Access to Jobs for Disadvantaged Populations	Increase in Access to Multimodal Travel Choices	Square Feet of Commercial/Industrial Development Supported	Tons of Goods Impacted	Improvement to Travel Time Reliability	Potential to Improve Air Quality	Other Factor Values Scaled by Potential Acreage Impacted	Support of Transportation-Efficient Land Development
Measure Value	0.0 persons	0.8 person hrs.	1.6 EPDO	906.3 EPDO / 100M VMT	1.1 jobs per resident	1.2 jobs per resident	0.0 adjusted users	0.0 thousand adj sq. ft.	3,320.5 thousand adj daily tons	0.0 adj. buffer time index	0.0 adjusted points	0.8 scaled points	adjusted jobs & pop.
Normalized Measure Value (0-100)	0.0	0.0	0.5	4.7	0.0	0.0	0.0	0.0	0.2	0.0	0.0	1.5	
Measure Weight (% of Factor)	50%	50%	50%	50%	60%	20%	20%	60%	20%	20%	50%	50%	N/A
Factor Value	0.0		2.6		0.0			0.0			0.7		0.0
Factor Weight (% of Project Score)	10%		30%		15%			35%			10%		N/A
Weighted Factor Value	0.0		0.8		0.0			0.0			0.1		
Project Benefit	0.9												
SMART SCALE Cost	\$5,432,185												
SMART SCALE Score (Project Benefit per \$10M SMART SCALE Cost)	<b>1.6</b>												

# PROJECT SCORECARD

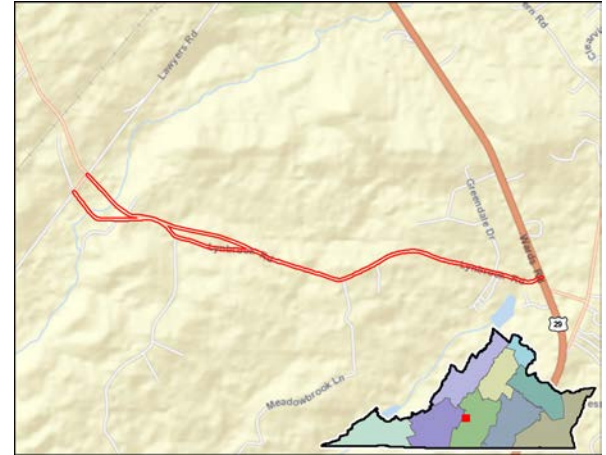
For more information on how to read a scorecard, click here.

Route 622, Lynbrook Road

App Id: 1281

This project is for the reconstruction and new construction of a segment of Route 622 from Route 29 to Route 683. Work includes alignment improvements and construction of a new bridge over Flat Creek.

Project Location..... Campbell County  
 SMART SCALE Area Type..... C  
 Submitting Entity..... Campbell County  
 Preliminary Engineering..... Complete  
 Right of Way..... Not Started  
 Construction..... Not Started  
 Expenditures to Date..... N/A  
 Key Fund Sources..... N/A  
 Administered By..... VDOT  
 Eligible Funding Program(s)..... Both  
 VTrans Need..... Cental Virginia Regional Network  
 ( Click for details )



<h1>1.3</h1> <p>SMART SCALE SCORE</p>	<h2>#263</h2> <p>OF 404 STATEWIDE</p>
	<h2>#19</h2> <p>OF 28 DISTRICTWIDE</p>

SMART SCALE Requested Funds..... **\$11,029,052**  
 Total Project Cost..... **\$11,029,052**  
 Project Benefit..... **1.1**  
 Project Benefit / Total Cost..... **1.0**

Factor	Congestion Mitigation		Safety		Accessibility			Economic Development			Environment		Land Use
	Increase in Peak Period Person Throughput	Reduction in Peak Period Delay	Reduction in Fatal and Injury Crashes	Reduction in Fatal and Injury Crash Rate	Increase in Access to Jobs	Increase in Access to Jobs for Disadvantaged Populations	Increase in Access to Multimodal Travel Choices	Square Feet of Commercial/Industrial Development Supported	Tons of Goods Impacted	Improvement to Travel Time Reliability	Potential to Improve Air Quality	Other Factor Values Scaled by Potential Acreage Impacted	Support of Transportation-Efficient Land Development
Measure Value	0.0 persons	0.0 person hrs.	14.4 EPDO	396.0 EPDO / 100M VMT	3.2 jobs per resident	3.3 jobs per resident	0.0 adjusted users	320,000.0 thousand adj sq. ft.	1,504.1 thousand adj daily tons	1,146,891.5 adj. buffer time index	0.0 adjusted points	0.9 scaled points	adjusted jobs & pop.
Normalized Measure Value (0-100)	0.0	0.0	4.4	2.1	0.1	0.1	0.0	1.1	0.1	0.1	0.0	1.8	
Measure Weight (% of Factor)	50%	50%	50%	50%	60%	20%	20%	60%	20%	20%	50%	50%	N/A
Factor Value	0.0		3.2		0.1			0.7			0.9		0.0
Factor Weight (% of Project Score)	15%		25%		25%			25%			10%		N/A
Weighted Factor Value	0.0		0.8		0.0			0.2			0.1		
Project Benefit	1.1												
SMART SCALE Cost	\$8,129,052												
SMART SCALE Score (Project Benefit per \$10M SMART SCALE Cost)	1.3												

# PROJECT SCORECARD

For more information on how to read a scorecard, click here.

Route 501 Passing Lanes

App Id: 1283

Provide improvements for passing lanes along a 1.9 mile segment of Route 501 south of Gladys Virginia.

Project Location..... Campbell County  
 SMART SCALE Area Type..... D  
 Submitting Entity..... Campbell County  
 Preliminary Engineering..... Underway  
 Right of Way..... Not Started  
 Construction..... Not Started  
 Expenditures to Date..... \$1,122,988  
 Key Fund Sources..... Bond  
 Administered By..... VDOT  
 Eligible Funding Program(s)..... Both  
 VTrans Need..... Cental Virginia Regional Network  
 ( Click for details )



<h1>1.9</h1> <p>SMART SCALE SCORE</p>	<h2>#236</h2> <p>OF 404 STATEWIDE</p>
	<h2>#14</h2> <p>OF 28 DISTRICTWIDE</p>

SMART SCALE Requested Funds..... **\$23,651,910**  
 Total Project Cost..... **\$23,651,910**  
 Project Benefit..... **4.2**  
 Project Benefit / Total Cost..... **1.8**

Factor	Congestion Mitigation		Safety		Accessibility			Economic Development			Environment		Land Use
	Increase in Peak Period Person Throughput	Reduction in Peak Period Delay	Reduction in Fatal and Injury Crashes	Reduction in Fatal and Injury Crash Rate	Increase in Access to Jobs	Increase in Access to Jobs for Disadvantaged Populations	Increase in Access to Multimodal Travel Choices	Square Feet of Commercial/Industrial Development Supported	Tons of Goods Impacted	Improvement to Travel Time Reliability	Potential to Improve Air Quality	Other Factor Values Scaled by Potential Acreage Impacted	Support of Transportation-Efficient Land Development
Measure Value	0.0 persons	0.0 person hrs.	58.4 EPDO	1,416.7 EPDO / 100M VMT	3.8 jobs per resident	4.0 jobs per resident	0.0 adjusted users	0.0 thousand adj sq. ft.	7,116.1 thousand adj daily tons	1,220,358.5 adj. buffer time index	0.0 adjusted points	3.6 scaled points	adjusted jobs & pop.
Normalized Measure Value (0-100)	0.0	0.0	17.8	7.3	0.1	0.2	0.0	0.0	0.4	0.1	0.0	7.0	
Measure Weight (% of Factor)	50%	50%	50%	50%	60%	20%	20%	60%	20%	20%	50%	50%	N/A
Factor Value	0.0		12.6		0.1			0.1			3.5		0.0
Factor Weight (% of Project Score)	10%		30%		15%			35%			10%		N/A
Weighted Factor Value	0.0		3.8		0.0			0.0			0.4		
Project Benefit	4.2												
SMART SCALE Cost	\$22,518,131												
SMART SCALE Score (Project Benefit per \$10M SMART SCALE Cost)	1.9												



# PROJECT SCORECARD

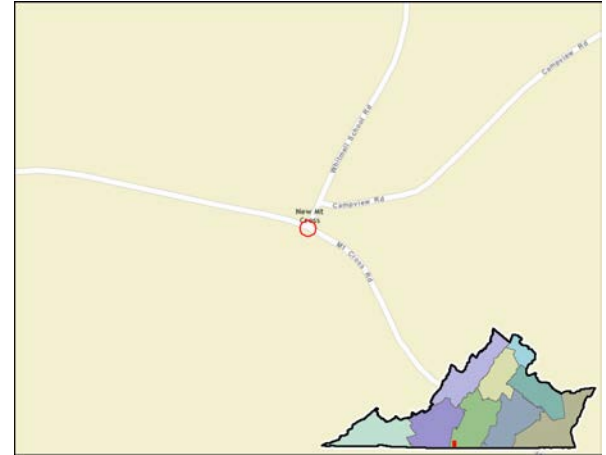
For more information on how to read a scorecard, click here.

Mt. Cross Rd./Whitmell School Rd. Intersection Improvements

App Id: 1347

The project involves safety improvements at the intersection of Mt Cross Rd (Rt 750/Rt 844) and Whitmell School Rd (Rt 750) to include the construction of a right-turn lane along WB Mt Cross Rd and implementation of access management strategies.

Project Location..... Pittsylvania County  
 SMART SCALE Area Type..... D  
 Submitting Entity..... Danville Metropolitan Planning Organization  
 Preliminary Engineering..... Not Started  
 Right of Way..... Not Started  
 Construction..... Not Started  
 Expenditures to Date..... N/A  
 Key Fund Sources..... N/A  
 Administered By..... VDOT  
 Eligible Funding Program(s)..... High Priority  
 VTrans Need..... Danville Regional Network  
 ( Click for details )



<h1>8.8</h1> <p>SMART SCALE SCORE</p>	<h2>#86</h2> <p>OF 404 STATEWIDE</p>
	<h2>#4</h2> <p>OF 28 DISTRICTWIDE</p>

SMART SCALE Requested Funds..... **\$1,083,903**  
 Total Project Cost..... **\$1,083,903**  
 Project Benefit..... **0.9**  
 Project Benefit / Total Cost..... **8.8**

Factor	Congestion Mitigation		Safety		Accessibility			Economic Development			Environment		Land Use
	Increase in Peak Period Person Throughput	Reduction in Peak Period Delay	Reduction in Fatal and Injury Crashes	Reduction in Fatal and Injury Crash Rate	Increase in Access to Jobs	Increase in Access to Jobs for Disadvantaged Populations	Increase in Access to Multimodal Travel Choices	Square Feet of Commercial/Industrial Development Supported	Tons of Goods Impacted	Improvement to Travel Time Reliability	Potential to Improve Air Quality	Other Factor Values Scaled by Potential Acreage Impacted	Support of Transportation-Efficient Land Development
Measure Value	0.0 persons	0.2 person hrs.	1.4 EPDO	1,033.7 EPDO / 100M VMT	0.0 jobs per resident	0.0 jobs per resident	0.0 adjusted users	0.0 thousand adj sq. ft.	0.0 thousand adj daily tons	0.0 adj. buffer time index	0.0 adjusted points	0.9 scaled points	adjusted jobs & pop.
Normalized Measure Value (0-100)	0.0	0.0	0.4	5.4	0.0	0.0	0.0	0.0	0.0	0.0	0.0	1.7	
Measure Weight (% of Factor)	50%	50%	50%	50%	60%	20%	20%	60%	20%	20%	50%	50%	N/A
Factor Value	0.0		2.9		0.0			0.0			0.8		0.0
Factor Weight (% of Project Score)	10%		30%		15%			35%			10%		N/A
Weighted Factor Value	0.0		0.9		0.0			0.0			0.1		
Project Benefit	0.9												
SMART SCALE Cost	\$1,083,903												
SMART SCALE Score (Project Benefit per \$10M SMART SCALE Cost)	<b>8.8</b>												



# PROJECT SCORECARD

For more information on how to read a scorecard, click here.

Mount Cross Road/Mill Creek Road Safety Improvements

App Id: 1354

Improvements will include an extension of an existing left turn lane on eastbound Mount Cross Road and the installation of a right-turn lane on westbound Mount Cross Road at its intersection with Mill Creek Road (Route 724).

Project Location..... Pittsylvania County  
 SMART SCALE Area Type..... D  
 Submitting Entity..... Danville Metropolitan Planning Organization  
 Preliminary Engineering..... Not Started  
 Right of Way..... Not Started  
 Construction..... Not Started  
 Expenditures to Date..... N/A  
 Key Fund Sources..... N/A  
 Administered By..... VDOT  
 Eligible Funding Program(s)..... High Priority  
 VTrans Need..... Danville Regional Network  
 ( Click for details )



<h1>3.5</h1> <p>SMART SCALE SCORE</p>	<h2>#161</h2> <p>OF 404 STATEWIDE</p>
	<h2>#10</h2> <p>OF 28 DISTRICTWIDE</p>

SMART SCALE Requested Funds..... **\$982,691**  
 Total Project Cost..... **\$982,691**  
 Project Benefit..... **0.3**  
 Project Benefit / Total Cost..... **3.5**

Factor	Congestion Mitigation		Safety		Accessibility			Economic Development			Environment		Land Use
	Increase in Peak Period Person Throughput	Reduction in Peak Period Delay	Reduction in Fatal and Injury Crashes	Reduction in Fatal and Injury Crash Rate	Increase in Access to Jobs	Increase in Access to Jobs for Disadvantaged Populations	Increase in Access to Multimodal Travel Choices	Square Feet of Commercial/Industrial Development Supported	Tons of Goods Impacted	Improvement to Travel Time Reliability	Potential to Improve Air Quality	Other Factor Values Scaled by Potential Acreage Impacted	Support of Transportation-Efficient Land Development
Measure Value	0.0 persons	0.7 person hrs.	1.2 EPDO	332.0 EPDO / 100M VMT	0.0 jobs per resident	0.0 jobs per resident	0.0 adjusted users	0.0 thousand adj sq. ft.	0.0 thousand adj daily tons	0.0 adj. buffer time index	0.0 adjusted points	0.3 scaled points	adjusted jobs & pop.
Normalized Measure Value (0-100)	0.0	0.0	0.4	1.7	0.0	0.0	0.0	0.0	0.0	0.0	0.0	0.6	
Measure Weight (% of Factor)	50%	50%	50%	50%	60%	20%	20%	60%	20%	20%	50%	50%	N/A
Factor Value	0.0		1.0		0.0			0.0			0.3		0.0
Factor Weight (% of Project Score)	10%		30%		15%			35%			10%		N/A
Weighted Factor Value	0.0		0.3		0.0			0.0			0.0		
Project Benefit	0.3												
SMART SCALE Cost	\$982,691												
SMART SCALE Score (Project Benefit per \$10M SMART SCALE Cost)	<b>3.5</b>												

# PROJECT SCORECARD

For more information on how to read a scorecard, click here.

Route 29 Access Management

App Id: 1357

Access Management along Route 29 through the Colleen Corridor to include entrance consolidation and reconstruction.

Project Location..... Nelson County  
 SMART SCALE Area Type..... C  
 Submitting Entity..... Nelson County  
 Preliminary Engineering..... Not Started  
 Right of Way..... Not Started  
 Construction..... Not Started  
 Expenditures to Date..... N/A  
 Key Fund Sources..... N/A  
 Administered By..... VDOT  
 Eligible Funding Program(s)..... District Grant  
 VTrans Need..... Safety: PSI Data and Geometric Issue  
 ( Click for details )



<h2>2.1</h2> <p>SMART SCALE SCORE</p>	<h3>#222</h3> <p>OF 404 STATEWIDE</p>
	<h3>#13</h3> <p>OF 28 DISTRICTWIDE</p>

SMART SCALE Requested Funds..... **\$1,467,040**  
 Total Project Cost..... **\$1,467,040**  
 Project Benefit..... **0.3**  
 Project Benefit / Total Cost..... **2.1**

Factor	Congestion Mitigation		Safety		Accessibility			Economic Development			Environment		Land Use
	Increase in Peak Period Person Throughput	Reduction in Peak Period Delay	Reduction in Fatal and Injury Crashes	Reduction in Fatal and Injury Crash Rate	Increase in Access to Jobs	Increase in Access to Jobs for Disadvantaged Populations	Increase in Access to Multimodal Travel Choices	Square Feet of Commercial/Industrial Development Supported	Tons of Goods Impacted	Improvement to Travel Time Reliability	Potential to Improve Air Quality	Other Factor Values Scaled by Potential Acreage Impacted	Support of Transportation-Efficient Land Development
Measure Value	0.0 persons	0.0 person hrs.	0.3 EPDO	80.0 EPDO / 100M VMT	0.0 jobs per resident	0.0 jobs per resident	0.0 adjusted users	0.0 thousand adj sq. ft.	39,151.6 thousand adj daily tons	0.0 adj. buffer time index	338.1 adjusted points	0.3 scaled points	adjusted jobs & pop.
Normalized Measure Value (0-100)	0.0	0.0	0.1	0.4	0.0	0.0	0.0	0.0	2.3	0.0	2.0	0.5	
Measure Weight (% of Factor)	50%	50%	50%	50%	60%	20%	20%	60%	20%	20%	50%	50%	N/A
Factor Value	0.0		0.2		0.0			0.5			1.2		0.0
Factor Weight (% of Project Score)	15%		25%		25%			25%			10%		N/A
Weighted Factor Value	0.0		0.1		0.0			0.1			0.1		
Project Benefit	0.3												
SMART SCALE Cost	\$1,467,040												
SMART SCALE Score (Project Benefit per \$10M SMART SCALE Cost)	2.1												

# PROJECT SCORECARD

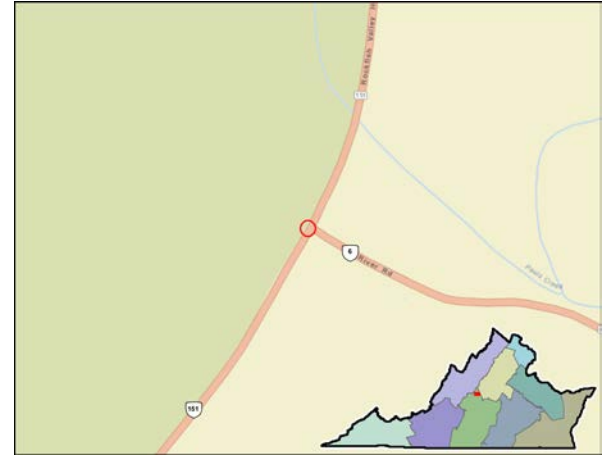
For more information on how to read a scorecard, click here.

Route 6/151 Intersection

App Id: 1358

Widen the east leg of the intersection creating a wider receiving lane for turning vehicles. Consider a roundabout or southbound left turn bay.

Project Location..... Nelson County  
 SMART SCALE Area Type..... C  
 Submitting Entity..... Nelson County  
 Preliminary Engineering..... Not Started  
 Right of Way..... Not Started  
 Construction..... Not Started  
 Expenditures to Date..... N/A  
 Key Fund Sources..... N/A  
 Administered By..... VDOT  
 Eligible Funding Program(s)..... District Grant  
 VTrans Need..... Safety: PSI Data and Geometric Issue  
 ( Click for details )



<h1>1.2</h1> <p>SMART SCALE SCORE</p>	<h2>#267</h2> <p>OF 404 STATEWIDE</p>
	<h2>#20</h2> <p>OF 28 DISTRICTWIDE</p>

SMART SCALE Requested Funds..... **\$5,114,563**  
 Total Project Cost..... **\$5,114,563**  
 Project Benefit..... **0.6**  
 Project Benefit / Total Cost..... **1.2**

Factor	Congestion Mitigation		Safety		Accessibility			Economic Development			Environment		Land Use
	Increase in Peak Period Person Throughput	Reduction in Peak Period Delay	Reduction in Fatal and Injury Crashes	Reduction in Fatal and Injury Crash Rate	Increase in Access to Jobs	Increase in Access to Jobs for Disadvantaged Populations	Increase in Access to Multimodal Travel Choices	Square Feet of Commercial/Industrial Development Supported	Tons of Goods Impacted	Improvement to Travel Time Reliability	Potential to Improve Air Quality	Other Factor Values Scaled by Potential Acreage Impacted	Support of Transportation-Efficient Land Development
Measure Value	0.0 persons	0.1 person hrs.	3.3 EPDO	716.3 EPDO / 100M VMT	0.0 jobs per resident	0.0 jobs per resident	0.0 adjusted users	0.0 thousand adj sq. ft.	0.0 thousand adj daily tons	94,633.0 adj. buffer time index	0.0 adjusted points	0.5 scaled points	adjusted jobs & pop.
Normalized Measure Value (0-100)	0.0	0.0	1.0	3.7	0.0	0.0	0.0	0.0	0.0	0.0	0.0	0.9	
Measure Weight (% of Factor)	50%	50%	50%	50%	60%	20%	20%	60%	20%	20%	50%	50%	N/A
Factor Value	0.0		2.4		0.0			0.0			0.5		0.0
Factor Weight (% of Project Score)	15%		25%		25%			25%			10%		N/A
Weighted Factor Value	0.0		0.6		0.0			0.0			0.0		
Project Benefit	0.6												
SMART SCALE Cost	\$5,114,563												
SMART SCALE Score (Project Benefit per \$10M SMART SCALE Cost)	1.2												

# PROJECT SCORECARD

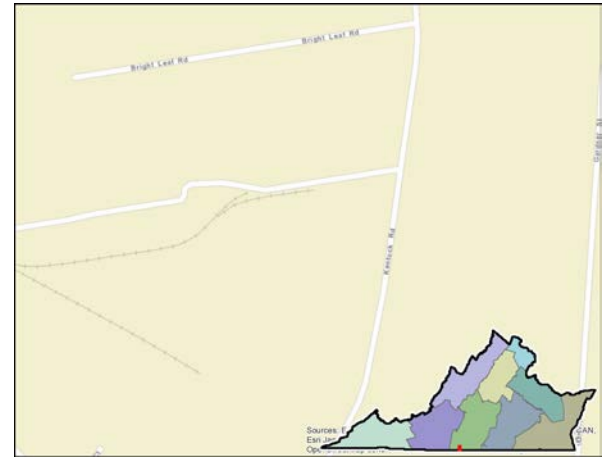
For more information on how to read a scorecard, click here.

Kentuck Road Improvements

App Id: 1370

Proposed spot Improvements along Kentuck Road between South Boston Road (US58) and Little Creek Road (Route 732). Improvements include road realignment, additional turn lanes and creation of a roundabout.

Project Location..... Danville  
 SMART SCALE Area Type..... D  
 Submitting Entity..... Danville City  
 Preliminary Engineering..... Not Started  
 Right of Way..... Not Started  
 Construction..... Not Started  
 Expenditures to Date..... N/A  
 Key Fund Sources..... N/A  
 Administered By..... Locality  
 Eligible Funding Program(s)..... Both  
 VTrans Need..... Danville Regional Network  
 ( Click for details )



<h1>3.8</h1> <p>SMART SCALE SCORE</p>	<h2>#149</h2> <p>OF 404 STATEWIDE</p>
	<h2>#8</h2> <p>OF 28 DISTRICTWIDE</p>

SMART SCALE Requested Funds..... **\$7,491,438**  
 Total Project Cost..... **\$7,491,438**  
 Project Benefit..... **2.9**  
 Project Benefit / Total Cost..... **3.8**

Factor	Congestion Mitigation		Safety		Accessibility			Economic Development			Environment		Land Use
	Increase in Peak Period Person Throughput	Reduction in Peak Period Delay	Reduction in Fatal and Injury Crashes	Reduction in Fatal and Injury Crash Rate	Increase in Access to Jobs	Increase in Access to Jobs for Disadvantaged Populations	Increase in Access to Multimodal Travel Choices	Square Feet of Commercial/Industrial Development Supported	Tons of Goods Impacted	Improvement to Travel Time Reliability	Potential to Improve Air Quality	Other Factor Values Scaled by Potential Acreage Impacted	Support of Transportation-Efficient Land Development
Measure Value	0.0 persons	0.0 person hrs.	19.4 EPDO	2,246.4 EPDO / 100M VMT	0.0 jobs per resident	0.0 jobs per resident	0.0 adjusted users	0.0 thousand adj sq. ft.	0.0 thousand adj daily tons	575,475.6 adj. buffer time index	0.0 adjusted points	2.5 scaled points	adjusted jobs & pop.
Normalized Measure Value (0-100)	0.0	0.0	5.9	11.6	0.0	0.0	0.0	0.0	0.0	0.0	0.0	4.8	
Measure Weight (% of Factor)	50%	50%	50%	50%	60%	20%	20%	60%	20%	20%	50%	50%	N/A
Factor Value	0.0		8.8		0.0			0.0			2.4		0.0
Factor Weight (% of Project Score)	10%		30%		15%			35%			10%		N/A
Weighted Factor Value	0.0		2.6		0.0			0.0			0.2		
Project Benefit	2.9												
SMART SCALE Cost	\$7,491,438												
SMART SCALE Score (Project Benefit per \$10M SMART SCALE Cost)	<b>3.8</b>												



# PROJECT SCORECARD

For more information on how to read a scorecard, click here.

Arnett Boulevard Improvements

App Id: 1371

Arnett Boulevard Improvements to address pedestrian and cyclist traffic and lack of safe route to GLH Johnson Elementary School issues

Project Location..... Danville  
 SMART SCALE Area Type..... D  
 Submitting Entity..... Danville City  
 Preliminary Engineering..... Not Started  
 Right of Way..... Not Started  
 Construction..... Not Started  
 Expenditures to Date..... N/A  
 Key Fund Sources..... N/A  
 Administered By..... Locality  
 Eligible Funding Program(s)..... District Grant  
 VTrans Need..... Danville UDA  
 ( Click for details )



<b>91.4</b> SMART SCALE SCORE	<b>#7</b>	OF 404 STATEWIDE
	<b>#1</b>	OF 28 DISTRICTWIDE

SMART SCALE Requested Funds..... **\$500,588**  
 Total Project Cost..... **\$500,588**  
 Project Benefit..... **4.6**  
 Project Benefit / Total Cost..... **91.4**

Factor	Congestion Mitigation		Safety		Accessibility			Economic Development			Environment		Land Use
	Increase in Peak Period Person Throughput	Reduction in Peak Period Delay	Reduction in Fatal and Injury Crashes	Reduction in Fatal and Injury Crash Rate	Increase in Access to Jobs	Increase in Access to Jobs for Disadvantaged Populations	Increase in Access to Multimodal Travel Choices	Square Feet of Commercial/Industrial Development Supported	Tons of Goods Impacted	Improvement to Travel Time Reliability	Potential to Improve Air Quality	Other Factor Values Scaled by Potential Acreage Impacted	Support of Transportation-Efficient Land Development
Measure Value	10.6 persons	0.0 person hrs.	23.0 EPDO	3,990.6 EPDO / 100M VMT	0.0 jobs per resident	0.0 jobs per resident	31.7 adjusted users	0.0 thousand adj sq. ft.	0.0 thousand adj daily tons	0.0 adj. buffer time index	42.3 adjusted points	4.2 scaled points	adjusted jobs & pop.
Normalized Measure Value (0-100)	0.1	0.0	7.0	20.7	0.0	0.0	0.2	0.0	0.0	0.0	0.2	8.1	
Measure Weight (% of Factor)	50%	50%	50%	50%	60%	20%	20%	60%	20%	20%	50%	50%	N/A
Factor Value	0.1		13.8		0.0			0.0			4.2		0.0
Factor Weight (% of Project Score)	10%		30%		15%			35%			10%		N/A
Weighted Factor Value	0.0		4.1		0.0			0.0			0.4		
Project Benefit	4.6												
SMART SCALE Cost	\$500,588												
SMART SCALE Score (Project Benefit per \$10M SMART SCALE Cost)	<b>91.4</b>												



# PROJECT SCORECARD

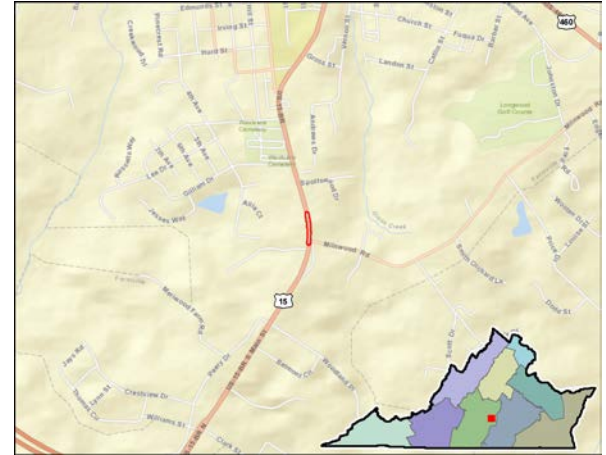
For more information on how to read a scorecard, click here.

South Main/Milnwood Road Intersection Safety Improvements

App Id: 1417

The purpose of this project is to enhance traffic safety, mitigate traffic congestion and enhance pedestrian safety by widening South Main Street to provide additional turn lanes at its intersection with Milnwood Road. intersection.

Project Location..... Farmville  
 SMART SCALE Area Type..... D  
 Submitting Entity..... Farmville Town  
 Preliminary Engineering..... Underway  
 Right of Way..... Not Started  
 Construction..... Not Started  
 Expenditures to Date..... N/A  
 Key Fund Sources..... N/A  
 Administered By..... Locality  
 Eligible Funding Program(s)..... Both  
 VTrans Need..... Heartland Corridor CoSS  
 ( Click for details )



<h1>1.8</h1> <p>SMART SCALE SCORE</p>	<h2>#237</h2> <p>OF 404 STATEWIDE</p>
	<h2>#15</h2> <p>OF 28 DISTRICTWIDE</p>

SMART SCALE Requested Funds..... **\$3,719,187**  
 Total Project Cost..... **\$3,719,187**  
 Project Benefit..... **0.6**  
 Project Benefit / Total Cost..... **1.6**

Factor	Congestion Mitigation		Safety		Accessibility			Economic Development			Environment		Land Use
	Increase in Peak Period Person Throughput	Reduction in Peak Period Delay	Reduction in Fatal and Injury Crashes	Reduction in Fatal and Injury Crash Rate	Increase in Access to Jobs	Increase in Access to Jobs for Disadvantaged Populations	Increase in Access to Multimodal Travel Choices	Square Feet of Commercial/Industrial Development Supported	Tons of Goods Impacted	Improvement to Travel Time Reliability	Potential to Improve Air Quality	Other Factor Values Scaled by Potential Acreage Impacted	Support of Transportation-Efficient Land Development
Measure Value	18.0 persons	1.2 person hrs.	2.9 EPDO	320.2 EPDO / 100M VMT	0.1 jobs per resident	0.0 jobs per resident	26.9 adjusted users	202,315.5 thousand adj sq. ft.	0.0 thousand adj daily tons	282,259.1 adj. buffer time index	35.9 adjusted points	0.5 scaled points	adjusted jobs & pop.
Normalized Measure Value (0-100)	0.2	0.0	0.9	1.7	0.0	0.0	0.2	0.7	0.0	0.0	0.2	1.0	
Measure Weight (% of Factor)	50%	50%	50%	50%	60%	20%	20%	60%	20%	20%	50%	50%	N/A
Factor Value	0.1		1.3		0.0			0.4			0.6		0.0
Factor Weight (% of Project Score)	10%		30%		15%			35%			10%		N/A
Weighted Factor Value	0.0		0.4		0.0			0.2			0.1		
Project Benefit	0.6												
SMART SCALE Cost	\$3,480,981												
SMART SCALE Score (Project Benefit per \$10M SMART SCALE Cost)	<b>1.8</b>												

# PROJECT SCORECARD

For more information on how to read a scorecard, click here.

Route 29/151 Safety Improvement

App Id: 1448

The intersection of Route 29 and Route 151 is unsafe. Sight distance is very difficult, therefore creating an unsafe intersection that is host to numerous accidents. This intersection had a total of 11 crashes with 5 fatalities.

Project Location..... Amherst County  
 SMART SCALE Area Type..... D  
 Submitting Entity..... Amherst County  
 Preliminary Engineering..... Not Needed  
 Right of Way..... Not Needed  
 Construction..... Not Needed  
 Expenditures to Date..... N/A  
 Key Fund Sources..... N/A  
 Administered By..... VDOT  
 Eligible Funding Program(s)..... Both  
 VTrans Need..... Cental Virginia Regional Network  
 ( Click for details )



<h1>31.4</h1> <p>SMART SCALE SCORE</p>	<h2>#33</h2> <p>OF 404 STATEWIDE</p>
	<h2>#3</h2> <p>OF 28 DISTRICTWIDE</p>

SMART SCALE Requested Funds..... **\$195,489**  
 Total Project Cost..... **\$195,489**  
 Project Benefit..... **0.6**  
 Project Benefit / Total Cost..... **31.4**

Factor	Congestion Mitigation		Safety		Accessibility			Economic Development			Environment		Land Use
	Increase in Peak Period Person Throughput	Reduction in Peak Period Delay	Reduction in Fatal and Injury Crashes	Reduction in Fatal and Injury Crash Rate	Increase in Access to Jobs	Increase in Access to Jobs for Disadvantaged Populations	Increase in Access to Multimodal Travel Choices	Square Feet of Commercial/Industrial Development Supported	Tons of Goods Impacted	Improvement to Travel Time Reliability	Potential to Improve Air Quality	Other Factor Values Scaled by Potential Acreage Impacted	Support of Transportation-Efficient Land Development
Measure Value	0.0 persons	0.0 person hrs.	6.6 EPDO	332.2 EPDO / 100M VMT	0.0 jobs per resident	0.0 jobs per resident	0.0 adjusted users	0.0 thousand adj sq. ft.	0.0 thousand adj daily tons	119,205.0 adj. buffer time index	0.0 adjusted points	0.6 scaled points	adjusted jobs & pop.
Normalized Measure Value (0-100)	0.0	0.0	2.0	1.7	0.0	0.0	0.0	0.0	0.0	0.0	0.0	1.1	
Measure Weight (% of Factor)	50%	50%	50%	50%	60%	20%	20%	60%	20%	20%	50%	50%	N/A
Factor Value	0.0		1.9		0.0			0.0			0.5		0.0
Factor Weight (% of Project Score)	10%		30%		15%			35%			10%		N/A
Weighted Factor Value	0.0		0.6		0.0			0.0			0.1		
Project Benefit	0.6												
SMART SCALE Cost	\$195,489												
SMART SCALE Score (Project Benefit per \$10M SMART SCALE Cost)	<b>31.4</b>												

# PROJECT SCORECARD

For more information on how to read a scorecard, click here.

Rt.15 Southbound at Rt. 617 (Gravel Hill Rd.)

App Id: 1460

Add a southbound left turn lane onto Rt. 617 for safety and smoother commuter traffic

Project Location..... Buckingham County  
 SMART SCALE Area Type..... D  
 Submitting Entity..... Buckingham County  
 Preliminary Engineering..... Not Started  
 Right of Way..... Not Started  
 Construction..... Not Started  
 Expenditures to Date..... N/A  
 Key Fund Sources..... N/A  
 Administered By..... VDOT  
 Eligible Funding Program(s)..... District Grant  
 VTrans Need..... Safety: Rural Long Range Plan  
 ( Click for details )



<h1>0.5</h1> <p>SMART SCALE SCORE</p>	<h2>#333</h2> <p>OF 404 STATEWIDE</p>
	<h2>#23</h2> <p>OF 28 DISTRICTWIDE</p>

SMART SCALE Requested Funds..... **\$1,884,411**  
 Total Project Cost..... **\$1,884,411**  
 Project Benefit..... **0.1**  
 Project Benefit / Total Cost..... **0.5**

Factor	Congestion Mitigation		Safety		Accessibility			Economic Development			Environment		Land Use
	Increase in Peak Period Person Throughput	Reduction in Peak Period Delay	Reduction in Fatal and Injury Crashes	Reduction in Fatal and Injury Crash Rate	Increase in Access to Jobs	Increase in Access to Jobs for Disadvantaged Populations	Increase in Access to Multimodal Travel Choices	Square Feet of Commercial/Industrial Development Supported	Tons of Goods Impacted	Improvement to Travel Time Reliability	Potential to Improve Air Quality	Other Factor Values Scaled by Potential Acreage Impacted	Support of Transportation-Efficient Land Development
Measure Value	0.0 persons	0.0 person hrs.	0.3 EPDO	83.8 EPDO / 100M VMT	0.0 jobs per resident	0.0 jobs per resident	0.0 adjusted users	0.0 thousand adj sq. ft.	0.0 thousand adj daily tons	44,979.5 adj. buffer time index	44.0 adjusted points	0.1 scaled points	adjusted jobs & pop.
Normalized Measure Value (0-100)	0.0	0.0	0.1	0.4	0.0	0.0	0.0	0.0	0.0	0.0	0.3	0.2	
Measure Weight (% of Factor)	50%	50%	50%	50%	60%	20%	20%	60%	20%	20%	50%	50%	N/A
Factor Value	0.0		0.3		0.0			0.0			0.2		0.0
Factor Weight (% of Project Score)	10%		30%		15%			35%			10%		N/A
Weighted Factor Value	0.0		0.1		0.0			0.0			0.0		
Project Benefit	0.1												
SMART SCALE Cost	\$1,884,411												
SMART SCALE Score (Project Benefit per \$10M SMART SCALE Cost)	<b>0.5</b>												

# PROJECT SCORECARD

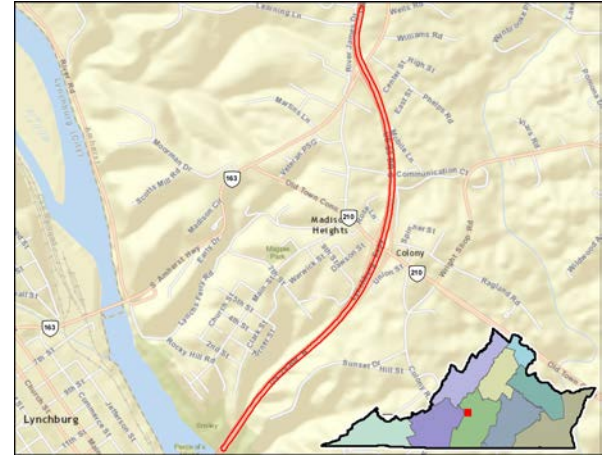
For more information on how to read a scorecard, click here.

Route 29 Median Barrier Replacement

App Id: 1482

Replace unsafe median barrier to improve safety along the Route 29 corridor.

Project Location..... Amherst County  
 SMART SCALE Area Type..... C  
 Submitting Entity..... Amherst County  
 Preliminary Engineering..... Not Needed  
 Right of Way..... Not Needed  
 Construction..... Not Started  
 Expenditures to Date..... N/A  
 Key Fund Sources..... N/A  
 Administered By..... VDOT  
 Eligible Funding Program(s)..... District Grant  
 VTrans Need..... Safety: PSI Data and Safety Hardware Issue  
 ( Click for details )



<h1>0.2</h1> <p>SMART SCALE SCORE</p>	<h2>#382</h2> <p>OF 404 STATEWIDE</p>
	<h2>#26</h2> <p>OF 28 DISTRICTWIDE</p>

SMART SCALE Requested Funds..... **\$5,186,848**  
 Total Project Cost..... **\$5,186,848**  
 Project Benefit..... **0.1**  
 Project Benefit / Total Cost..... **0.2**

Factor	Congestion Mitigation		Safety		Accessibility			Economic Development			Environment		Land Use
	Increase in Peak Period Person Throughput	Reduction in Peak Period Delay	Reduction in Fatal and Injury Crashes	Reduction in Fatal and Injury Crash Rate	Increase in Access to Jobs	Increase in Access to Jobs for Disadvantaged Populations	Increase in Access to Multimodal Travel Choices	Square Feet of Commercial/Industrial Development Supported	Tons of Goods Impacted	Improvement to Travel Time Reliability	Potential to Improve Air Quality	Other Factor Values Scaled by Potential Acreage Impacted	Support of Transportation-Efficient Land Development
Measure Value	0.0 persons	0.0 person hrs.	1.7 EPDO	10.3 EPDO / 100M VMT	0.0 jobs per resident	0.0 jobs per resident	0.0 adjusted users	0.0 thousand adj sq. ft.	0.0 thousand adj daily tons	2,888,465.9 adj. buffer time index	0.0 adjusted points	0.1 scaled points	adjusted jobs & pop.
Normalized Measure Value (0-100)	0.0	0.0	0.5	0.1	0.0	0.0	0.0	0.0	0.0	0.2	0.0	0.1	
Measure Weight (% of Factor)	50%	50%	50%	50%	60%	20%	20%	60%	20%	20%	50%	50%	N/A
Factor Value	0.0		0.3		0.0			0.0			0.1		0.0
Factor Weight (% of Project Score)	15%		25%		25%			25%			10%		N/A
Weighted Factor Value	0.0		0.1		0.0			0.0			0.0		
Project Benefit	0.1												
SMART SCALE Cost	\$5,186,848												
SMART SCALE Score (Project Benefit per \$10M SMART SCALE Cost)	<b>0.2</b>												



# PROJECT SCORECARD

For more information on how to read a scorecard, click here.

RTE 221 - INTERSECTION IMPROVEMENTS.

App Id: 1483

The Lynchburg Expressway (US 501) One-Way Pair Project is intended to relieve congestion and improve safety at the US 221 intersection by splitting 501 into a one-way pair on either side of 221.

Project Location..... Lynchburg  
 SMART SCALE Area Type..... C  
 Submitting Entity..... Lynchburg City  
 Preliminary Engineering..... Underway  
 Right of Way..... Complete  
 Construction..... Not Started  
 Expenditures to Date..... N/A  
 Key Fund Sources..... N/A  
 Administered By..... Locality  
 Eligible Funding Program(s)..... Both  
 VTrans Need..... Heartland Corridor CoSS  
 ( Click for details )



<h1>2.2</h1> <p>SMART SCALE SCORE</p>	<h2>#215</h2> <p>OF 404 STATEWIDE</p>
	<h2>#12</h2> <p>OF 28 DISTRICTWIDE</p>

SMART SCALE Requested Funds..... **\$42,104,390**  
 Total Project Cost..... **\$42,104,390**  
 Project Benefit..... **5.2**  
 Project Benefit / Total Cost..... **1.2**

Factor	Congestion Mitigation		Safety		Accessibility			Economic Development			Environment		Land Use
	Increase in Peak Period Person Throughput	Reduction in Peak Period Delay	Reduction in Fatal and Injury Crashes	Reduction in Fatal and Injury Crash Rate	Increase in Access to Jobs	Increase in Access to Jobs for Disadvantaged Populations	Increase in Access to Multimodal Travel Choices	Square Feet of Commercial/Industrial Development Supported	Tons of Goods Impacted	Improvement to Travel Time Reliability	Potential to Improve Air Quality	Other Factor Values Scaled by Potential Acreage Impacted	Support of Transportation-Efficient Land Development
Measure Value	1,144.6 persons	280.0 person hrs.	5.7 EPDO	49.6 EPDO / 100M VMT	26.5 jobs per resident	27.1 jobs per resident	796.8 adjusted users	4,171,400.0 thousand adj sq. ft.	18,374.7 thousand adj daily tons	7,885,479.0 adj. buffer time index	876.5 adjusted points	4.5 scaled points	adjusted jobs & pop.
Normalized Measure Value (0-100)	11.3	8.6	1.7	0.3	1.0	1.0	5.4	14.8	1.1	0.6	5.1	8.7	
Measure Weight (% of Factor)	50%	50%	50%	50%	60%	20%	20%	60%	20%	20%	50%	50%	N/A
Factor Value	10.0		1.0		1.9			9.2			6.9		0.0
Factor Weight (% of Project Score)	15%		25%		25%			25%			10%		N/A
Weighted Factor Value	1.5		0.2		0.5			2.3			0.7		
Project Benefit	5.2												
SMART SCALE Cost	\$24,105,306												
SMART SCALE Score (Project Benefit per \$10M SMART SCALE Cost)	2.2												



# PROJECT SCORECARD

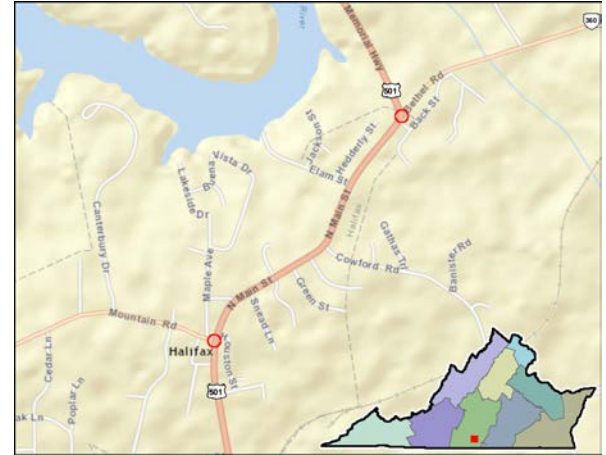
For more information on how to read a scorecard, click here.

Town of Halifax

App Id: 1492

US Hwy 501 corridor/intersection improvements submitted for Smart Scale include: 1) US501 (L.P. Bailey Memorial Hwy.)/VA360 (Bethel Rd.) roundabout installation; 2) US501 (Main St.)/VA360 (Mountain Rd.) increased turning radius construction.

Project Location..... Halifax County  
 SMART SCALE Area Type..... D  
 Submitting Entity..... Southside Planning District Commission  
 Preliminary Engineering..... Not Started  
 Right of Way..... Not Started  
 Construction..... Not Started  
 Expenditures to Date..... N/A  
 Key Fund Sources..... N/A  
 Administered By..... VDOT  
 Eligible Funding Program(s).....  
 VTrans Need..... Town of Halifax UDA  
 ( Click for details )



<h1>0.6</h1> <p>SMART SCALE SCORE</p>	<h2>#319</h2> <p>OF 404 STATEWIDE</p>
	<h2>#22</h2> <p>OF 28 DISTRICTWIDE</p>

SMART SCALE Requested Funds..... **\$7,956,051**  
 Total Project Cost..... **\$7,956,051**  
 Project Benefit..... **0.5**  
 Project Benefit / Total Cost..... **0.6**

Factor	Congestion Mitigation		Safety		Accessibility			Economic Development			Environment		Land Use
	Increase in Peak Period Person Throughput	Reduction in Peak Period Delay	Reduction in Fatal and Injury Crashes	Reduction in Fatal and Injury Crash Rate	Increase in Access to Jobs	Increase in Access to Jobs for Disadvantaged Populations	Increase in Access to Multimodal Travel Choices	Square Feet of Commercial/Industrial Development Supported	Tons of Goods Impacted	Improvement to Travel Time Reliability	Potential to Improve Air Quality	Other Factor Values Scaled by Potential Acreage Impacted	Support of Transportation-Efficient Land Development
Measure Value	7.9 persons	0.4 person hrs.	3.4 EPDO	396.7 EPDO / 100M VMT	0.0 jobs per resident	0.0 jobs per resident	11.8 adjusted users	0.0 thousand adj sq. ft.	0.0 thousand adj daily tons	323,768.5 adj. buffer time index	15.7 adjusted points	0.4 scaled points	adjusted jobs & pop.
Normalized Measure Value (0-100)	0.1	0.0	1.0	2.1	0.0	0.0	0.1	0.0	0.0	0.0	0.1	0.8	
Measure Weight (% of Factor)	50%	50%	50%	50%	60%	20%	20%	60%	20%	20%	50%	50%	N/A
Factor Value	0.0		1.5		0.0			0.0			0.5		0.0
Factor Weight (% of Project Score)	10%		30%		15%			35%			10%		N/A
Weighted Factor Value	0.0		0.5		0.0			0.0			0.0		
Project Benefit	0.5												
SMART SCALE Cost	\$7,956,051												
SMART SCALE Score (Project Benefit per \$10M SMART SCALE Cost)	<b>0.6</b>												

# PROJECT SCORECARD

For more information on how to read a scorecard, click here.

Old Courthouse Road Improvement Project

App Id: 1495

This project will provide improvements to the Old Courthouse Rd. corridor--a major corridor into the Town.

Project Location..... Appomattox County  
 SMART SCALE Area Type..... D  
 Submitting Entity..... Appomattox County  
 Preliminary Engineering..... Not Started  
 Right of Way..... Not Started  
 Construction..... Not Started  
 Expenditures to Date..... N/A  
 Key Fund Sources..... N/A  
 Administered By..... Locality  
 Eligible Funding Program(s)..... Both  
 VTrans Need..... Cental Virginia Regional Network  
 ( Click for details )



<h1>5.6</h1> <p>SMART SCALE SCORE</p>	<h2>#129</h2> <p>OF 404 STATEWIDE</p>
	<h2>#7</h2> <p>OF 28 DISTRICTWIDE</p>

SMART SCALE Requested Funds..... **\$11,546,256**  
 Total Project Cost..... **\$11,546,256**  
 Project Benefit..... **6.5**  
 Project Benefit / Total Cost..... **5.6**

Factor	Congestion Mitigation		Safety		Accessibility			Economic Development			Environment		Land Use
	Increase in Peak Period Person Throughput	Reduction in Peak Period Delay	Reduction in Fatal and Injury Crashes	Reduction in Fatal and Injury Crash Rate	Increase in Access to Jobs	Increase in Access to Jobs for Disadvantaged Populations	Increase in Access to Multimodal Travel Choices	Square Feet of Commercial/Industrial Development Supported	Tons of Goods Impacted	Improvement to Travel Time Reliability	Potential to Improve Air Quality	Other Factor Values Scaled by Potential Acreage Impacted	Support of Transportation-Efficient Land Development
Measure Value	4.0 persons	0.0 person hrs.	49.6 EPDO	3,502.5 EPDO / 100M VMT	0.1 jobs per resident	0.1 jobs per resident	12.0 adjusted users	1,385,000.0 thousand adj sq. ft.	1,013.5 thousand adj daily tons	5,235,672.2 adj. buffer time index	16.0 adjusted points	4.8 scaled points	adjusted jobs & pop.
Normalized Measure Value (0-100)	0.0	0.0	15.1	18.1	0.0	0.0	0.1	4.9	0.1	0.4	0.1	9.2	
Measure Weight (% of Factor)	50%	50%	50%	50%	60%	20%	20%	60%	20%	20%	50%	50%	N/A
Factor Value	0.0		16.6		0.0			3.0			4.7		0.0
Factor Weight (% of Project Score)	10%		30%		15%			35%			10%		N/A
Weighted Factor Value	0.0		5.0		0.0			1.1			0.5		
Project Benefit	6.5												
SMART SCALE Cost	\$11,546,256												
SMART SCALE Score (Project Benefit per \$10M SMART SCALE Cost)	5.6												

# PROJECT SCORECARD

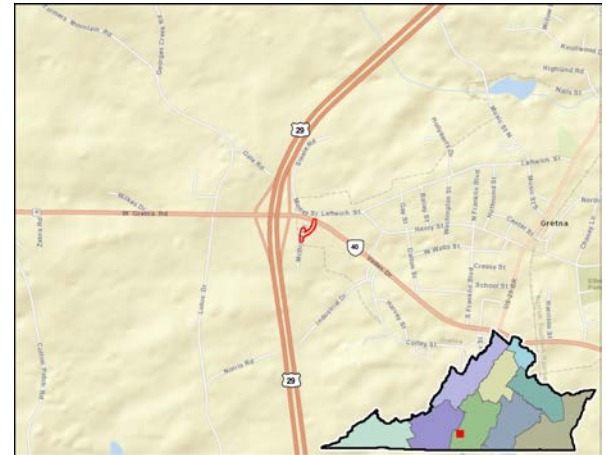
For more information on how to read a scorecard, click here.

Route 40 and McBride Lane Intersection Improvements

App Id: 1499

Improve existing intersection of Route 40 and McBride Lane in the Town of Gretna

Project Location..... Pittsylvania County  
 SMART SCALE Area Type..... D  
 Submitting Entity..... Pittsylvania County  
 Preliminary Engineering..... Not Started  
 Right of Way..... Not Started  
 Construction..... Not Started  
 Expenditures to Date..... N/A  
 Key Fund Sources..... N/A  
 Administered By..... VDOT  
 Eligible Funding Program(s)..... Both  
 VTrans Need..... Danville Regional Network  
 ( Click for details )



<h1>0.7</h1> <p>SMART SCALE SCORE</p>	<h2>#317</h2> <p>OF 404 STATEWIDE</p>
	<h2>#21</h2> <p>OF 28 DISTRICTWIDE</p>

SMART SCALE Requested Funds..... **\$7,563,443**  
 Total Project Cost..... **\$7,563,443**  
 Project Benefit..... **0.5**  
 Project Benefit / Total Cost..... **0.7**

Factor	Congestion Mitigation		Safety		Accessibility			Economic Development			Environment		Land Use
	Increase in Peak Period Person Throughput	Reduction in Peak Period Delay	Reduction in Fatal and Injury Crashes	Reduction in Fatal and Injury Crash Rate	Increase in Access to Jobs	Increase in Access to Jobs for Disadvantaged Populations	Increase in Access to Multimodal Travel Choices	Square Feet of Commercial/Industrial Development Supported	Tons of Goods Impacted	Improvement to Travel Time Reliability	Potential to Improve Air Quality	Other Factor Values Scaled by Potential Acreage Impacted	Support of Transportation-Efficient Land Development
Measure Value	4.0 persons	0.1 person hrs.	0.3 EPDO	106.5 EPDO / 100M VMT	0.0 jobs per resident	0.0 jobs per resident	0.0 adjusted users	450,000.0 thousand adj sq. ft.	0.0 thousand adj daily tons	0.0 adj. buffer time index	67.4 adjusted points	0.4 scaled points	adjusted jobs & pop.
Normalized Measure Value (0-100)	0.0	0.0	0.1	0.6	0.0	0.0	0.0	1.6	0.0	0.0	0.4	0.8	
Measure Weight (% of Factor)	50%	50%	50%	50%	60%	20%	20%	60%	20%	20%	50%	50%	N/A
Factor Value	0.0		0.3		0.0			1.0			0.6		0.0
Factor Weight (% of Project Score)	10%		30%		15%			35%			10%		N/A
Weighted Factor Value	0.0		0.1		0.0			0.3			0.1		
Project Benefit	0.5												
SMART SCALE Cost	\$7,563,443												
SMART SCALE Score (Project Benefit per \$10M SMART SCALE Cost)	<b>0.7</b>												

# PROJECT SCORECARD

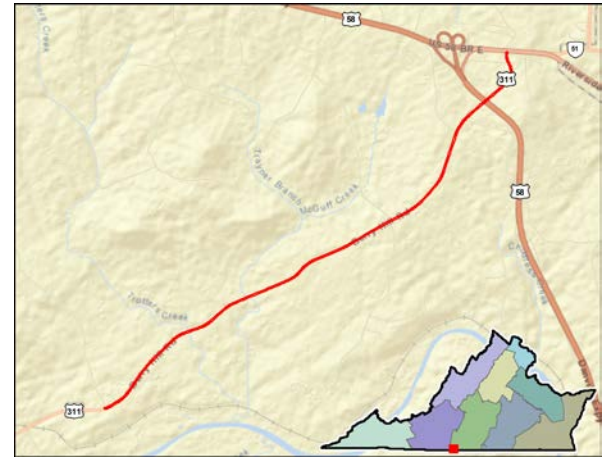
For more information on how to read a scorecard, click here.

Berry Hill Road Improvements

App Id: 1500

Widen existing Route 311, Berry Hill Road, from 20 feet of pavement to two 12' lanes with 8' shoulders, 6' paved, and 4' ditches.

Project Location..... Pittsylvania County  
 SMART SCALE Area Type..... D  
 Submitting Entity..... Pittsylvania County  
 Preliminary Engineering..... Not Started  
 Right of Way..... Not Started  
 Construction..... Not Started  
 Expenditures to Date..... N/A  
 Key Fund Sources..... N/A  
 Administered By..... VDOT  
 Eligible Funding Program(s)..... Both  
 VTrans Need..... Danville Regional Network  
 ( Click for details )



<h1>2.9</h1> <p>SMART SCALE SCORE</p>	<h2>#186</h2> <p>OF 404 STATEWIDE</p>
	<h2>#11</h2> <p>OF 28 DISTRICTWIDE</p>

SMART SCALE Requested Funds..... **\$29,051,670**  
 Total Project Cost..... **\$29,051,670**  
 Project Benefit..... **8.3**  
 Project Benefit / Total Cost..... **2.9**

Factor	Congestion Mitigation		Safety		Accessibility			Economic Development			Environment		Land Use
	Increase in Peak Period Person Throughput	Reduction in Peak Period Delay	Reduction in Fatal and Injury Crashes	Reduction in Fatal and Injury Crash Rate	Increase in Access to Jobs	Increase in Access to Jobs for Disadvantaged Populations	Increase in Access to Multimodal Travel Choices	Square Feet of Commercial/Industrial Development Supported	Tons of Goods Impacted	Improvement to Travel Time Reliability	Potential to Improve Air Quality	Other Factor Values Scaled by Potential Acreage Impacted	Support of Transportation-Efficient Land Development
Measure Value	0.0 persons	0.0 person hrs.	26.0 EPDO	813.0 EPDO / 100M VMT	11.3 jobs per resident	11.7 jobs per resident	0.0 adjusted users	7,685,000.0 thousand adj sq. ft.	1,920.0 thousand adj daily tons	1,381,486.5 adj. buffer time index	10.5 adjusted points	7.0 scaled points	adjusted jobs & pop.
Normalized Measure Value (0-100)	0.0	0.0	7.9	4.2	0.4	0.4	0.0	27.3	0.1	0.1	0.1	13.5	
Measure Weight (% of Factor)	50%	50%	50%	50%	60%	20%	20%	60%	20%	20%	50%	50%	N/A
Factor Value	0.0		6.1		0.3			16.4			6.8		0.0
Factor Weight (% of Project Score)	10%		30%		15%			35%			10%		N/A
Weighted Factor Value	0.0		1.8		0.1			5.7			0.7		
Project Benefit	8.3												
SMART SCALE Cost	\$29,051,670												
SMART SCALE Score (Project Benefit per \$10M SMART SCALE Cost)	2.9												



# PROJECT SCORECARD

For more information on how to read a scorecard, click here.

Hamilton Blvd. Corridor Improvements

App Id: 1611

Construct a 4 lane facility to better serve freight and commuter patterns serving the Route 501 Regional Network Corridor and through the Town Of South Boston to support the urban development area.

Project Location..... South Boston  
 SMART SCALE Area Type..... D  
 Submitting Entity..... South Boston Town  
 Preliminary Engineering..... Not Needed  
 Right of Way..... Not Needed  
 Construction..... Not Needed  
 Expenditures to Date..... N/A  
 Key Fund Sources..... N/A  
 Administered By..... Locality  
 Eligible Funding Program(s)..... District Grant  
 VTrans Need..... South Boston UDA  
 ( Click for details )



<h1>0.3</h1> <p>SMART SCALE SCORE</p>	<h2>#363</h2> <p>OF 404 STATEWIDE</p>
	<h2>#25</h2> <p>OF 28 DISTRICTWIDE</p>

SMART SCALE Requested Funds..... **\$26,558,030**  
 Total Project Cost..... **\$26,558,030**  
 Project Benefit..... **0.8**  
 Project Benefit / Total Cost..... **0.3**

Factor	Congestion Mitigation		Safety		Accessibility			Economic Development			Environment		Land Use
	Increase in Peak Period Person Throughput	Reduction in Peak Period Delay	Reduction in Fatal and Injury Crashes	Reduction in Fatal and Injury Crash Rate	Increase in Access to Jobs	Increase in Access to Jobs for Disadvantaged Populations	Increase in Access to Multimodal Travel Choices	Square Feet of Commercial/Industrial Development Supported	Tons of Goods Impacted	Improvement to Travel Time Reliability	Potential to Improve Air Quality	Other Factor Values Scaled by Potential Acreage Impacted	Support of Transportation-Efficient Land Development
Measure Value	6.4 persons	0.0 person hrs.	10.8 EPDO	271.1 EPDO / 100M VMT	0.0 jobs per resident	0.0 jobs per resident	9.6 adjusted users	0.0 thousand adj sq. ft.	0.0 thousand adj daily tons	2,234,543.1 adj. buffer time index	12.8 adjusted points	0.7 scaled points	adjusted jobs & pop.
Normalized Measure Value (0-100)	0.1	0.0	3.3	1.4	0.0	0.0	0.1	0.0	0.0	0.2	0.1	1.3	
Measure Weight (% of Factor)	50%	50%	50%	50%	60%	20%	20%	60%	20%	20%	50%	50%	N/A
Factor Value	0.0		2.3		0.0			0.0			0.7		0.0
Factor Weight (% of Project Score)	10%		30%		15%			35%			10%		N/A
Weighted Factor Value	0.0		0.7		0.0			0.0			0.1		
Project Benefit	0.8												
SMART SCALE Cost	\$26,558,030												
SMART SCALE Score (Project Benefit per \$10M SMART SCALE Cost)	<b>0.3</b>												

# PROJECT SCORECARD

For more information on how to read a scorecard, click here.

Columbia Road (690) and Cartersville Road (45)

App Id: 1676

Construct Roundabout at Route 690 at the intersection Route 45 to improve safety due to sight distance concerns and accidents.

Project Location..... Cumberland County  
 SMART SCALE Area Type..... D  
 Submitting Entity..... Cumberland County  
 Preliminary Engineering..... Not Started  
 Right of Way..... Not Started  
 Construction..... Not Started  
 Expenditures to Date..... N/A  
 Key Fund Sources..... N/A  
 Administered By..... VDOT  
 Eligible Funding Program(s)..... District Grant  
 VTrans Need..... Safety: Crash History and Geometric Issue  
 ( Click for details )



<h1>6.9</h1> <p>SMART SCALE SCORE</p>	<h2>#109</h2> <p>OF 404 STATEWIDE</p>
	<h2>#6</h2> <p>OF 28 DISTRICTWIDE</p>

SMART SCALE Requested Funds..... **\$3,526,388**  
 Total Project Cost..... **\$3,526,388**  
 Project Benefit..... **2.4**  
 Project Benefit / Total Cost..... **6.9**

Factor	Congestion Mitigation		Safety		Accessibility			Economic Development			Environment		Land Use
	Increase in Peak Period Person Throughput	Reduction in Peak Period Delay	Reduction in Fatal and Injury Crashes	Reduction in Fatal and Injury Crash Rate	Increase in Access to Jobs	Increase in Access to Jobs for Disadvantaged Populations	Increase in Access to Multimodal Travel Choices	Square Feet of Commercial/Industrial Development Supported	Tons of Goods Impacted	Improvement to Travel Time Reliability	Potential to Improve Air Quality	Other Factor Values Scaled by Potential Acreage Impacted	Support of Transportation-Efficient Land Development
Measure Value	0.0 persons	0.2 person hrs.	1.6 EPDO	2,769.5 EPDO / 100M VMT	0.0 jobs per resident	0.0 jobs per resident	0.0 adjusted users	0.0 thousand adj sq. ft.	0.0 thousand adj daily tons	19,573.6 adj. buffer time index	0.0 adjusted points	2.1 scaled points	adjusted jobs & pop.
Normalized Measure Value (0-100)	0.0	0.0	0.5	14.3	0.0	0.0	0.0	0.0	0.0	0.0	0.0	4.1	
Measure Weight (% of Factor)	50%	50%	50%	50%	60%	20%	20%	60%	20%	20%	50%	50%	N/A
Factor Value	0.0		7.4		0.0			0.0			2.0		0.0
Factor Weight (% of Project Score)	10%		30%		15%			35%			10%		N/A
Weighted Factor Value	0.0		2.2		0.0			0.0			0.2		
Project Benefit	2.4												
SMART SCALE Cost	\$3,526,388												
SMART SCALE Score (Project Benefit per \$10M SMART SCALE Cost)	6.9												

# PROJECT SCORECARD

For more information on how to read a scorecard, click here.

Route 60 and Route 13 Intersection Improvement

App Id: 1681

Reconstruct intersection to make a four-leg intersection with Route 60, Route 13 and Route 728. Construct a right and left turn lane for Route 13.

Project Location..... Cumberland County  
 SMART SCALE Area Type..... D  
 Submitting Entity..... Cumberland County  
 Preliminary Engineering..... Not Started  
 Right of Way..... Not Started  
 Construction..... Not Started  
 Expenditures to Date..... N/A  
 Key Fund Sources..... N/A  
 Administered By..... VDOT  
 Eligible Funding Program(s)..... District Grant  
 VTrans Need..... Safety: Crash History and Geometric Issue  
 ( Click for details )



<h1>0.4</h1> <p>SMART SCALE SCORE</p>	<h2>#347</h2> <p>OF 404 STATEWIDE</p>
	<h2>#24</h2> <p>OF 28 DISTRICTWIDE</p>

SMART SCALE Requested Funds..... **\$4,999,685**  
 Total Project Cost..... **\$4,999,685**  
 Project Benefit..... **0.2**  
 Project Benefit / Total Cost..... **0.4**

Factor	Congestion Mitigation		Safety		Accessibility			Economic Development			Environment		Land Use
	Increase in Peak Period Person Throughput	Reduction in Peak Period Delay	Reduction in Fatal and Injury Crashes	Reduction in Fatal and Injury Crash Rate	Increase in Access to Jobs	Increase in Access to Jobs for Disadvantaged Populations	Increase in Access to Multimodal Travel Choices	Square Feet of Commercial/Industrial Development Supported	Tons of Goods Impacted	Improvement to Travel Time Reliability	Potential to Improve Air Quality	Other Factor Values Scaled by Potential Acreage Impacted	Support of Transportation-Efficient Land Development
Measure Value	0.0 persons	0.0 person hrs.	0.6 EPDO	199.6 EPDO / 100M VMT	0.0 jobs per resident	0.0 jobs per resident	0.0 adjusted users	0.0 thousand adj sq. ft.	0.0 thousand adj daily tons	104,235.7 adj. buffer time index	0.0 adjusted points	0.2 scaled points	adjusted jobs & pop.
Normalized Measure Value (0-100)	0.0	0.0	0.2	1.0	0.0	0.0	0.0	0.0	0.0	0.0	0.0	0.3	
Measure Weight (% of Factor)	50%	50%	50%	50%	60%	20%	20%	60%	20%	20%	50%	50%	N/A
Factor Value	0.0		0.6		0.0			0.0			0.2		0.0
Factor Weight (% of Project Score)	10%		30%		15%			35%			10%		N/A
Weighted Factor Value	0.0		0.2		0.0			0.0			0.0		
Project Benefit	0.2												
SMART SCALE Cost	\$4,999,685												
SMART SCALE Score (Project Benefit per \$10M SMART SCALE Cost)	<b>0.4</b>												