

# FREDERICKSBURG DISTRICT

## FREDERICKSBURG DISTRICT

App #	Project Name	District Rank	State Rank	Smart Score	Page #
1349	Chilesburg-Route 738/639 Intersection Safety Improvements	1	8	81.9	03-20
1141	Lafayette Blvd and Harrison Road	2	28	33.5	03-10
1382	Twin Lake-Kensington Bike/Ped Connector	3	41	27.0	03-22
1140	Route 208 and Hood Drive Intersection Improvement	4	51	18.7	03-09
1104	107714: Improve Brooke and Leeland VRE Sta, Const PS VRE Sta	5	58	14.9	03-05
1145	I-95 Exit 126, Route 1 Southbound onto Southpoint Parkway	6	104	7.2	03-12
1443	Pedestrian/Streetscape Improvements on Rte 17B - Main St	7	158	3.6	03-25
1101	Rappahannock River Crossing - Northbound (I-95 CD Lanes)	8	182	2.9	03-04
1110	Loretto Park & Ride Improvements	9	194	2.6	03-06
1411	Route 614 Reconstruction - Hickory Fork Road	10	202	2.5	03-23
1025	Naval Base Dahlgren Turn Lane Extension Route 301 South	11	216	2.1	03-02
1366	New Commuter Parking Lot for Route 3 East (Stafford)	12	235	1.9	03-21
1180	1. Stafford - Route 1/Enon Road Intersection and Roadway IMP	13	257	1.5	03-15
1009	Park and Ride	14	260	1.4	03-01
1138	Route 208 and Breckenridge Drive Intersection Improvements	15	261	1.4	03-08
1194	3. Stafford - Butler Road Widening	16	271	1.2	03-17
1144	Widening of Smith Station Road at Courthouse Road	17	280	1.0	03-11
1111	Multi-Use Paths - Routes 17/698/1036	18	291	0.9	03-07
1192	2. Stafford - Rt.1/Eskimo Hill Rd/American Legion Rd INT IMP	19	307	0.7	03-16
1412	George Washington Memorial Highway - Route 17 Widening	20	330	0.6	03-24
1154	Pedestrian Improvements on Rte 1208 - Greate Road	21	350	0.4	03-14
1148	Bridge over I95 and Widening of Harrison Rd - Salem Chuch Rd	22	353	0.4	03-13
1056	4 Lane Widening (Divided) Rt. 3 East At Rt. 301 Intersection	23	359	0.3	03-03
1200	4. Stafford - Decatur Road Reconstruction	24	374	0.2	03-18
1211	Construct Passing Lanes on Route 3 near Lerty	25	375	0.2	03-19

# PROJECT SCORECARD

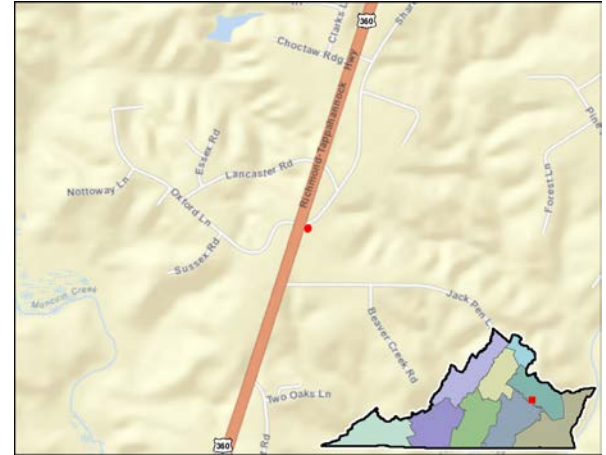
For more information on how to read a scorecard, click here.

Park and Ride

App Id: 1009

Sharon Road Park and Ride

Project Location..... King William County  
 SMART SCALE Area Type..... D  
 Submitting Entity..... King William County  
 Preliminary Engineering..... Not Started  
 Right of Way..... Not Started  
 Construction..... Not Started  
 Expenditures to Date..... N/A  
 Key Fund Sources..... N/A  
 Administered By..... VDOT  
 Eligible Funding Program(s)..... District Grant  
 VTrans Need..... Central Garage UDA  
 ( Click for details )



<h1>1.4</h1> <p>SMART SCALE SCORE</p>	<h2>#260</h2> <p>OF 404 STATEWIDE</p>
	<h2>#14</h2> <p>OF 25 DISTRICTWIDE</p>

SMART SCALE Requested Funds..... **\$614,000**  
 Total Project Cost..... **\$614,000**  
 Project Benefit..... **0.1**  
 Project Benefit / Total Cost..... **1.4**

Factor	Congestion Mitigation		Safety		Accessibility			Economic Development			Environment		Land Use
	Increase in Peak Period Person Throughput	Reduction in Peak Period Delay	Reduction in Fatal and Injury Crashes	Reduction in Fatal and Injury Crash Rate	Increase in Access to Jobs	Increase in Access to Jobs for Disadvantaged Populations	Increase in Access to Multimodal Travel Choices	Square Feet of Commercial/Industrial Development Supported	Tons of Goods Impacted	Improvement to Travel Time Reliability	Potential to Improve Air Quality	Other Factor Values Scaled by Potential Acreage Impacted	Support of Transportation-Efficient Land Development
Measure Value	4.8 persons	0.1 person hrs.	1.5 EPDO	0.9 EPDO / 100M VMT	0.0 jobs per resident	0.0 jobs per resident	19.2 adjusted users	0.0 thousand adj sq. ft.	314.0 thousand adj daily tons	0.0 adj. buffer time index	9.6 adjusted points	0.1 scaled points	adjusted jobs & pop.
Normalized Measure Value (0-100)	0.0	0.0	0.5	0.0	0.0	0.0	0.1	0.0	0.0	0.0	0.1	0.1	
Measure Weight (% of Factor)	50%	50%	50%	50%	60%	20%	20%	60%	20%	20%	50%	50%	N/A
Factor Value	0.0		0.2		0.0			0.0			0.1		0.0
Factor Weight (% of Project Score)	10%		30%		15%			35%			10%		N/A
Weighted Factor Value	0.0		0.1		0.0			0.0			0.0		
Project Benefit	0.1												
SMART SCALE Cost	\$614,000												
SMART SCALE Score (Project Benefit per \$10M SMART SCALE Cost)	<b>1.4</b>												

# PROJECT SCORECARD

For more information on how to read a scorecard, click here.

Naval Base Dahlgren Turn Lane Extension Route 301 South

App Id: 1025

Project would extend the existing southbound Rt 301 left turn lane at Rt 614 Potomac Dr. which provides access to Gate B of Dahlgren Naval Base. This project would create one continuous left turn lane just north of RT 614 Potomac Dr. on RT 301.

Project Location..... King George County  
 SMART SCALE Area Type..... D  
 Submitting Entity..... King George County  
 Preliminary Engineering..... Not Started  
 Right of Way..... Not Started  
 Construction..... Not Started  
 Expenditures to Date..... N/A  
 Key Fund Sources..... N/A  
 Administered By..... VDOT  
 Eligible Funding Program(s)..... District Grant  
 VTrans Need..... Dahlgren UDA  
 ( Click for details )



<h2>2.1</h2> <p>SMART SCALE SCORE</p>	<h3>#216</h3> <p>OF 404 STATEWIDE</p>
	<h3>#11</h3> <p>OF 25 DISTRICTWIDE</p>

SMART SCALE Requested Funds..... **\$2,000,000**  
 Total Project Cost..... **\$2,000,000**  
 Project Benefit..... **0.4**  
 Project Benefit / Total Cost..... **2.1**

Factor	Congestion Mitigation		Safety		Accessibility			Economic Development			Environment		Land Use
	Increase in Peak Period Person Throughput	Reduction in Peak Period Delay	Reduction in Fatal and Injury Crashes	Reduction in Fatal and Injury Crash Rate	Increase in Access to Jobs	Increase in Access to Jobs for Disadvantaged Populations	Increase in Access to Multimodal Travel Choices	Square Feet of Commercial/Industrial Development Supported	Tons of Goods Impacted	Improvement to Travel Time Reliability	Potential to Improve Air Quality	Other Factor Values Scaled by Potential Acreage Impacted	Support of Transportation-Efficient Land Development
Measure Value	0.0 persons	8.4 person hrs.	0.5 EPDO	31.5 EPDO / 100M VMT	1.5 jobs per resident	1.5 jobs per resident	0.0 adjusted users	187,500.0 thousand adj sq. ft.	44,290.7 thousand adj daily tons	0.0 adj. buffer time index	0.0 adjusted points	0.4 scaled points	adjusted jobs & pop.
Normalized Measure Value (0-100)	0.0	0.3	0.1	0.2	0.1	0.1	0.0	0.7	2.6	0.0	0.0	0.7	
Measure Weight (% of Factor)	50%	50%	50%	50%	60%	20%	20%	60%	20%	20%	50%	50%	N/A
Factor Value	0.1		0.2		0.0			0.9			0.4		0.0
Factor Weight (% of Project Score)	10%		30%		15%			35%			10%		N/A
Weighted Factor Value	0.0		0.0		0.0			0.3			0.0		
Project Benefit	0.4												
SMART SCALE Cost	\$2,000,000												
SMART SCALE Score (Project Benefit per \$10M SMART SCALE Cost)	2.1												

# PROJECT SCORECARD

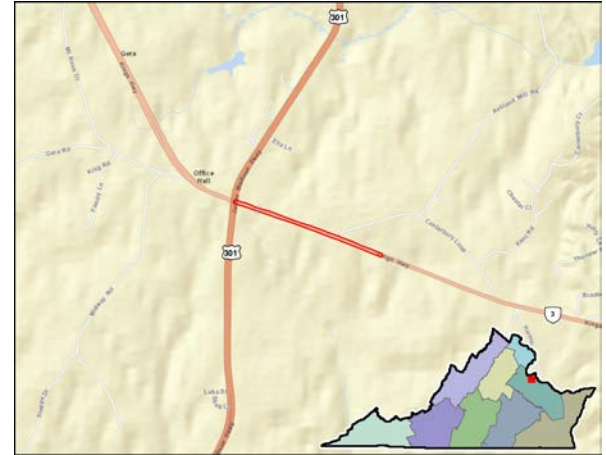
For more information on how to read a scorecard, click here.

4 Lane Widening (Divided) Rt. 3 East At Rt. 301 Intersection

App Id: 1056

Turn Lane Additions and Widening of Route 3 East (4 Lanes Divided) at the Intersection of RTE 301 and improvements to the signalized intersection and pedestrian access as shown by VDOT in the Northern Neck Corridor Transportation Study.

Project Location..... King George County  
 SMART SCALE Area Type..... D  
 Submitting Entity..... King George County  
 Preliminary Engineering..... Not Started  
 Right of Way..... Not Started  
 Construction..... Not Started  
 Expenditures to Date..... N/A  
 Key Fund Sources..... N/A  
 Administered By..... VDOT  
 Eligible Funding Program(s)..... Both  
 VTrans Need..... Washington to North Carolina CoSS  
 ( Click for details )



<h1>0.3</h1> <p>SMART SCALE SCORE</p>	<h2>#359</h2> <p>OF 404 STATEWIDE</p>
	<h2>#23</h2> <p>OF 25 DISTRICTWIDE</p>

SMART SCALE Requested Funds..... **\$15,000,000**  
 Total Project Cost..... **\$15,000,000**  
 Project Benefit..... **0.5**  
 Project Benefit / Total Cost..... **0.3**

Factor	Congestion Mitigation		Safety		Accessibility			Economic Development			Environment		Land Use
	Increase in Peak Period Person Throughput	Reduction in Peak Period Delay	Reduction in Fatal and Injury Crashes	Reduction in Fatal and Injury Crash Rate	Increase in Access to Jobs	Increase in Access to Jobs for Disadvantaged Populations	Increase in Access to Multimodal Travel Choices	Square Feet of Commercial/Industrial Development Supported	Tons of Goods Impacted	Improvement to Travel Time Reliability	Potential to Improve Air Quality	Other Factor Values Scaled by Potential Acreage Impacted	Support of Transportation-Efficient Land Development
Measure Value	0.0 persons	2.6 person hrs.	3.6 EPDO	146.2 EPDO / 100M VMT	0.1 jobs per resident	0.1 jobs per resident	0.0 adjusted users	137,500.0 thousand adj sq. ft.	11,959.7 thousand adj daily tons	922,325.5 adj. buffer time index	0.0 adjusted points	0.4 scaled points	adjusted jobs & pop.
Normalized Measure Value (0-100)	0.0	0.1	1.1	0.8	0.0	0.0	0.0	0.5	0.7	0.1	0.0	0.8	
Measure Weight (% of Factor)	50%	50%	50%	50%	60%	20%	20%	60%	20%	20%	50%	50%	N/A
Factor Value	0.0		0.9		0.0			0.4			0.4		0.0
Factor Weight (% of Project Score)	10%		30%		15%			35%			10%		N/A
Weighted Factor Value	0.0		0.3		0.0			0.2			0.0		
Project Benefit	0.5												
SMART SCALE Cost	\$15,000,000												
SMART SCALE Score (Project Benefit per \$10M SMART SCALE Cost)	<b>0.3</b>												



# PROJECT SCORECARD

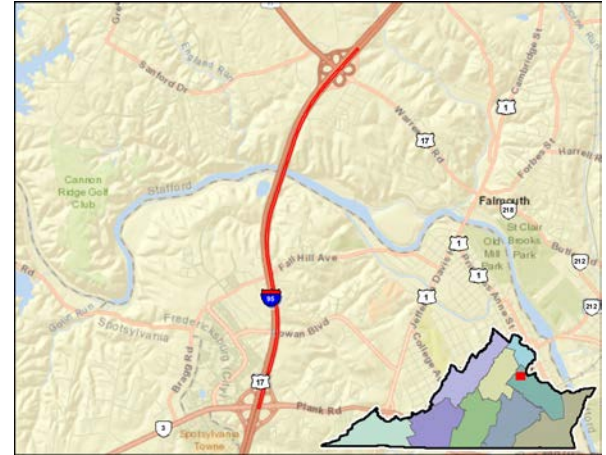
For more information on how to read a scorecard, click here.

Rappahannock River Crossing - Northbound (I-95 CD Lanes)

App Id: 1101

Collector-distributor road parallel to Interstate 95 northbound between Exit 130 (Route 3) and Exit 133 (US 17) in the City of Fredericksburg and Stafford County. Interchange improvements at Exit 133 (US 17).

Project Location..... Multiple  
 SMART SCALE Area Type..... A  
 Submitting Entity..... Fredericksburg Area Metropolitan Planning Organization  
 Preliminary Engineering..... Not Started  
 Right of Way..... Not Started  
 Construction..... Not Started  
 Expenditures to Date..... N/A  
 Key Fund Sources..... N/A  
 Administered By..... VDOT  
 Eligible Funding Program(s)..... High Priority  
 VTrans Need..... Washington to North Carolina CoSS  
 (*Click for details*)



<h1>2.9</h1> <p>SMART SCALE SCORE</p>	<h2>#182</h2> <p>OF 404 STATEWIDE</p>
	<h2>#8</h2> <p>OF 25 DISTRICTWIDE</p>

SMART SCALE Requested Funds..... **\$132,000,000**  
 Total Project Cost..... **\$132,000,000**  
 Project Benefit..... **37.8**  
 Project Benefit / Total Cost..... **2.9**

Factor	Congestion Mitigation		Safety		Accessibility			Economic Development			Environment		Land Use
	Increase in Peak Period Person Throughput	Reduction in Peak Period Delay	Reduction in Fatal and Injury Crashes	Reduction in Fatal and Injury Crash Rate	Increase in Access to Jobs	Increase in Access to Jobs for Disadvantaged Populations	Increase in Access to Multimodal Travel Choices	Square Feet of Commercial/Industrial Development Supported	Tons of Goods Impacted	Improvement to Travel Time Reliability	Potential to Improve Air Quality	Other Factor Values Scaled by Potential Acreage Impacted	Support of Transportation-Efficient Land Development
Measure Value	6,189.2 persons	1,781.5 person hrs.	35.3 EPDO	26.4 EPDO / 100M VMT	475.9 jobs per resident	480.1 jobs per resident	0.0 adjusted users	928,975.1 thousand adj sq. ft.	1,067,834.8 thousand adj daily tons	1,363,468,218.4 adj. buffer time index	15,263.0 adjusted points	15.8 scaled points	9,012.5 adjusted jobs & pop.
Normalized Measure Value (0-100)	61.1	54.8	10.7	0.1	18.2	18.3	0.0	3.3	63.0	100.0	89.1	30.8	8.0
Measure Weight (% of Factor)	50%	50%	50%	50%	60%	20%	20%	60%	20%	20%	50%	50%	100%
Factor Value	57.9		5.4		14.5			34.6			59.9		8.0
Factor Weight (% of Project Score)	45%		5%		15%			5%			10%		20%
Weighted Factor Value	26.1		0.3		2.2			1.7			6.0		1.6
Project Benefit	37.8												
SMART SCALE Cost	\$130,000,000												
SMART SCALE Score (Project Benefit per \$10M SMART SCALE Cost)	<b>2.9</b>												

# PROJECT SCORECARD

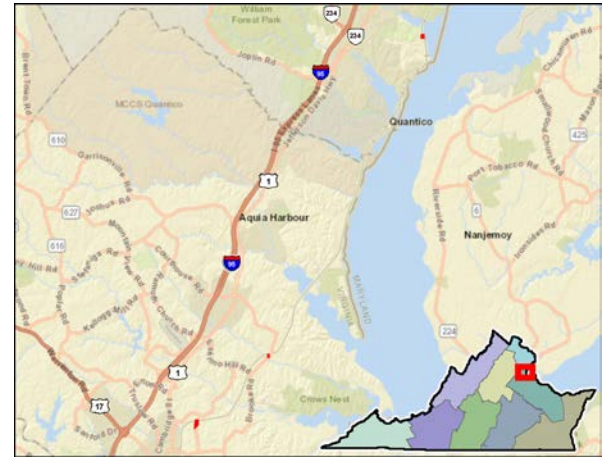
For more information on how to read a scorecard, click here.

107714: Improve Brooke and Leeland VRE Sta, Const PS VRE Sta

App Id: 1104

To increase capacity of Leeland and Brooke VRE Stations by adding a 2nd Platform, extending the existing platform, expanding the parking lot at Leeland Road Station, and adding bike/ped accommodations. Construct new VRE Station at Potomac Shores.

Project Location..... Stafford County  
 SMART SCALE Area Type..... A  
 Submitting Entity..... George Washington Regional Commission  
 Preliminary Engineering..... Not Started  
 Right of Way..... Not Needed  
 Construction..... Not Started  
 Expenditures to Date..... N/A  
 Key Fund Sources..... N/A  
 Administered By..... Other  
 Eligible Funding Program(s)..... High Priority  
 VTrans Need..... Washington to North Carolina CoSS  
 ( Click for details )



<h1>14.9</h1> <p>SMART SCALE SCORE</p>	<h2>#58</h2> <p>OF 404 STATEWIDE</p>
	<h2>#5</h2> <p>OF 25 DISTRICTWIDE</p>

SMART SCALE Requested Funds..... **\$59,759,770**  
 Total Project Cost..... **\$59,759,770**  
 Project Benefit..... **33.0**  
 Project Benefit / Total Cost..... **5.5**

Factor	Congestion Mitigation		Safety		Accessibility			Economic Development			Environment		Land Use
	Increase in Peak Period Person Throughput	Reduction in Peak Period Delay	Reduction in Fatal and Injury Crashes	Reduction in Fatal and Injury Crash Rate	Increase in Access to Jobs	Increase in Access to Jobs for Disadvantaged Populations	Increase in Access to Multimodal Travel Choices	Square Feet of Commercial/Industrial Development Supported	Tons of Goods Impacted	Improvement to Travel Time Reliability	Potential to Improve Air Quality	Other Factor Values Scaled by Potential Acreage Impacted	Support of Transportation-Efficient Land Development
Measure Value	1,105.4 persons	1,225.4 person hrs.	167.6 EPDO	0.0 EPDO / 100M VMT	1,628.4 jobs per resident	1,640.5 jobs per resident	5,527.1 adjusted users	18,678,940.2 thousand adj sq. ft.	1,604,065.2 thousand adj daily tons	0.0 adj. buffer time index	11,284.0 adjusted points	28.4 scaled points	10,698.9 adjusted jobs & pop.
Normalized Measure Value (0-100)	10.9	37.7	51.0	0.0	62.1	62.4	37.8	66.3	94.7	0.0	65.9	55.1	9.5
Measure Weight (% of Factor)	50%	50%	100%	0%	60%	20%	20%	60%	20%	20%	50%	50%	100%
Factor Value	24.3		51.0		57.3			58.7			60.5		9.5
Factor Weight (% of Project Score)	45%		5%		15%			5%			10%		20%
Weighted Factor Value	10.9		2.6		8.6			2.9			6.0		1.9
Project Benefit	33.0												
SMART SCALE Cost	\$22,047,320												
SMART SCALE Score (Project Benefit per \$10M SMART SCALE Cost)	14.9												

# PROJECT SCORECARD

For more information on how to read a scorecard, click here.

Loretto Park & Ride Improvements

App Id: 1110

Improve existing Park & Ride Lot at Routes 17/654 Intersection in Loretto (Essex County)

Project Location..... Essex County  
 SMART SCALE Area Type..... D  
 Submitting Entity..... Essex County  
 Preliminary Engineering..... Not Started  
 Right of Way..... Not Needed  
 Construction..... Not Started  
 Expenditures to Date..... N/A  
 Key Fund Sources..... N/A  
 Administered By..... VDOT  
 Eligible Funding Program(s)..... District Grant  
 VTrans Need..... PnR paving and lighting reduce risk  
 ( Click for details )



<h1>2.6</h1> <p>SMART SCALE SCORE</p>	<h2>#194</h2> <p>OF 404 STATEWIDE</p>
	<h2>#9</h2> <p>OF 25 DISTRICTWIDE</p>

SMART SCALE Requested Funds..... **\$915,000**  
 Total Project Cost..... **\$915,000**  
 Project Benefit..... **0.2**  
 Project Benefit / Total Cost..... **2.6**

Factor	Congestion Mitigation		Safety		Accessibility			Economic Development			Environment		Land Use
	Increase in Peak Period Person Throughput	Reduction in Peak Period Delay	Reduction in Fatal and Injury Crashes	Reduction in Fatal and Injury Crash Rate	Increase in Access to Jobs	Increase in Access to Jobs for Disadvantaged Populations	Increase in Access to Multimodal Travel Choices	Square Feet of Commercial/Industrial Development Supported	Tons of Goods Impacted	Improvement to Travel Time Reliability	Potential to Improve Air Quality	Other Factor Values Scaled by Potential Acreage Impacted	Support of Transportation-Efficient Land Development
Measure Value	0.5 persons	0.0 person hrs.	0.2 EPDO	0.0 EPDO / 100M VMT	0.0 jobs per resident	0.0 jobs per resident	1.9 adjusted users	0.0 thousand adj sq. ft.	35.3 thousand adj daily tons	0.0 adj. buffer time index	726.5 adjusted points	0.2 scaled points	adjusted jobs & pop.
Normalized Measure Value (0-100)	0.0	0.0	0.1	0.0	0.0	0.0	0.0	0.0	0.0	0.0	4.2	0.3	
Measure Weight (% of Factor)	50%	50%	50%	50%	60%	20%	20%	60%	20%	20%	50%	50%	N/A
Factor Value	0.0		0.0		0.0			0.0			2.3		0.0
Factor Weight (% of Project Score)	10%		30%		15%			35%			10%		N/A
Weighted Factor Value	0.0		0.0		0.0			0.0			0.2		
Project Benefit	0.2												
SMART SCALE Cost	\$915,000												
SMART SCALE Score (Project Benefit per \$10M SMART SCALE Cost)	<b>2.6</b>												



# PROJECT SCORECARD

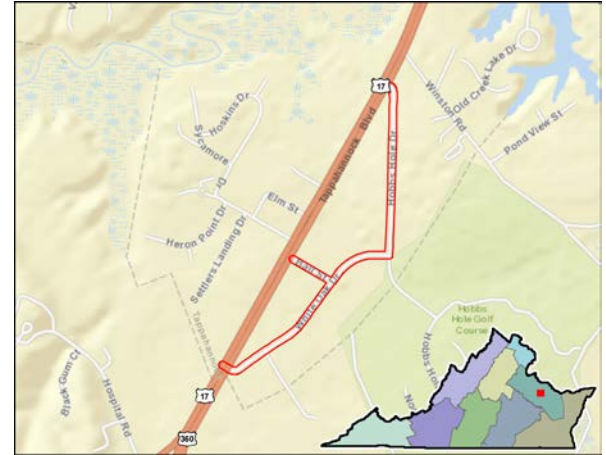
For more information on how to read a scorecard, click here.

Multi-Use Paths - Routes 17/698/1036

App Id: 1111

10' wide shared-use path along the eastern side of Route 698, White Oak Dr and Hobbs Hole Dr. between two intersections with Route 17

Project Location..... Essex County  
 SMART SCALE Area Type..... D  
 Submitting Entity..... Essex County  
 Preliminary Engineering..... Not Started  
 Right of Way..... Not Started  
 Construction..... Not Started  
 Expenditures to Date..... N/A  
 Key Fund Sources..... N/A  
 Administered By..... VDOT  
 Eligible Funding Program(s)..... Both  
 VTrans Need..... Safety: Geometric Issue  
 ( Click for details )



<h1 style="font-size: 2em;">0.9</h1> <p>SMART SCALE SCORE</p>	<h2 style="font-size: 1.5em;">#291</h2> <p>OF 404 STATEWIDE</p>
	<h2 style="font-size: 1.5em;">#18</h2> <p>OF 25 DISTRICTWIDE</p>

SMART SCALE Requested Funds..... **\$4,678,000**  
 Total Project Cost..... **\$4,678,000**  
 Project Benefit..... **0.4**  
 Project Benefit / Total Cost..... **0.9**

Factor	Congestion Mitigation		Safety		Accessibility			Economic Development			Environment		Land Use
	Increase in Peak Period Person Throughput	Reduction in Peak Period Delay	Reduction in Fatal and Injury Crashes	Reduction in Fatal and Injury Crash Rate	Increase in Access to Jobs	Increase in Access to Jobs for Disadvantaged Populations	Increase in Access to Multimodal Travel Choices	Square Feet of Commercial/Industrial Development Supported	Tons of Goods Impacted	Improvement to Travel Time Reliability	Potential to Improve Air Quality	Other Factor Values Scaled by Potential Acreage Impacted	Support of Transportation-Efficient Land Development
Measure Value	4.0 persons	0.0 person hrs.	3.6 EPDO	235.2 EPDO / 100M VMT	2.0 jobs per resident	2.0 jobs per resident	11.9 adjusted users	0.0 thousand adj sq. ft.	0.0 thousand adj daily tons	2,110,934.6 adj. buffer time index	15.9 adjusted points	0.3 scaled points	adjusted jobs & pop.
Normalized Measure Value (0-100)	0.0	0.0	1.1	1.2	0.1	0.1	0.1	0.0	0.0	0.2	0.1	0.7	
Measure Weight (% of Factor)	50%	50%	50%	50%	60%	20%	20%	60%	20%	20%	50%	50%	N/A
Factor Value	0.0		1.2		0.1			0.0			0.4		0.0
Factor Weight (% of Project Score)	10%		30%		15%			35%			10%		N/A
Weighted Factor Value	0.0		0.3		0.0			0.0			0.0		
Project Benefit	0.4												
SMART SCALE Cost	\$4,678,000												
SMART SCALE Score (Project Benefit per \$10M SMART SCALE Cost)	<b>0.9</b>												

# PROJECT SCORECARD

For more information on how to read a scorecard, click here.

Route 208 and Breckenridge Drive Intersection Improvements

App Id: 1138

Intersection improvements to Route 208 and Breckenridge Drive. This project would provide additional turn lane stacking on 208 and reduce the back up of traffic on Route 208 (Courthouse Road).

Project Location..... Spotsylvania County  
 SMART SCALE Area Type..... A  
 Submitting Entity..... Spotsylvania County  
 Preliminary Engineering..... Not Started  
 Right of Way..... Underway  
 Construction..... Not Started  
 Expenditures to Date..... N/A  
 Key Fund Sources..... N/A  
 Administered By..... VDOT  
 Eligible Funding Program(s)..... Both  
 VTrans Need..... Fredericksburg Regional Network  
 ( Click for details )



<h1>1.4</h1> <p>SMART SCALE SCORE</p>	<h2>#261</h2> <p>OF 404 STATEWIDE</p>
	<h2>#15</h2> <p>OF 25 DISTRICTWIDE</p>

SMART SCALE Requested Funds..... **\$1,767,500**  
 Total Project Cost..... **\$1,767,500**  
 Project Benefit..... **0.2**  
 Project Benefit / Total Cost..... **1.3**

Factor	Congestion Mitigation		Safety		Accessibility			Economic Development			Environment		Land Use
	Increase in Peak Period Person Throughput	Reduction in Peak Period Delay	Reduction in Fatal and Injury Crashes	Reduction in Fatal and Injury Crash Rate	Increase in Access to Jobs	Increase in Access to Jobs for Disadvantaged Populations	Increase in Access to Multimodal Travel Choices	Square Feet of Commercial/Industrial Development Supported	Tons of Goods Impacted	Improvement to Travel Time Reliability	Potential to Improve Air Quality	Other Factor Values Scaled by Potential Acreage Impacted	Support of Transportation-Efficient Land Development
Measure Value	3.1 persons	0.0 person hrs.	9.2 EPDO	443.1 EPDO / 100M VMT	13.4 jobs per resident	13.3 jobs per resident	15.4 adjusted users	83,750.0 thousand adj sq. ft.	0.0 thousand adj daily tons	3,742,740.5 adj. buffer time index	6.2 adjusted points	0.2 scaled points	0.0 adjusted jobs & pop.
Normalized Measure Value (0-100)	0.0	0.0	2.8	2.3	0.5	0.5	0.1	0.3	0.0	0.3	0.0	0.3	0.0
Measure Weight (% of Factor)	50%	50%	50%	50%	60%	20%	20%	60%	20%	20%	50%	50%	100%
Factor Value	0.0		2.5		0.4			0.2			0.2		0.0
Factor Weight (% of Project Score)	45%		5%		15%			5%			10%		20%
Weighted Factor Value	0.0		0.1		0.1			0.0			0.0		0.0
Project Benefit	0.2												
SMART SCALE Cost	\$1,592,500												
SMART SCALE Score (Project Benefit per \$10M SMART SCALE Cost)	1.4												

# PROJECT SCORECARD

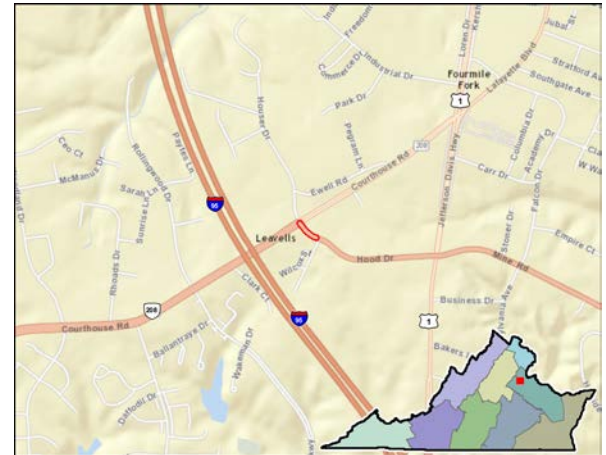
For more information on how to read a scorecard, click here.

Route 208 and Hood Drive Intersection Improvement

App Id: 1140

This project will provide intersection improvements to Route 208 (Courthouse Road) and Route 636 (Hood Drive). Hood Drive provides the direct access point to the park and ride for commuters to access I95.

Project Location..... Spotsylvania County  
 SMART SCALE Area Type..... A  
 Submitting Entity..... Spotsylvania County  
 Preliminary Engineering..... Not Started  
 Right of Way..... Not Started  
 Construction..... Not Started  
 Expenditures to Date..... N/A  
 Key Fund Sources..... N/A  
 Administered By..... VDOT  
 Eligible Funding Program(s)..... Both  
 VTrans Need..... Fredericksburg Regional Network  
 ( Click for details )



<h1>18.7</h1> <p>SMART SCALE SCORE</p>	<h2>#51</h2> <p>OF 404 STATEWIDE</p>
	<h2>#4</h2> <p>OF 25 DISTRICTWIDE</p>

SMART SCALE Requested Funds..... **\$5,150,000**  
 Total Project Cost..... **\$5,150,000**  
 Project Benefit..... **9.1**  
 Project Benefit / Total Cost..... **17.8**

Factor	Congestion Mitigation		Safety		Accessibility			Economic Development			Environment		Land Use
	Increase in Peak Period Person Throughput	Reduction in Peak Period Delay	Reduction in Fatal and Injury Crashes	Reduction in Fatal and Injury Crash Rate	Increase in Access to Jobs	Increase in Access to Jobs for Disadvantaged Populations	Increase in Access to Multimodal Travel Choices	Square Feet of Commercial/Industrial Development Supported	Tons of Goods Impacted	Improvement to Travel Time Reliability	Potential to Improve Air Quality	Other Factor Values Scaled by Potential Acreage Impacted	Support of Transportation-Efficient Land Development
Measure Value	1,656.8 persons	252.2 person hrs.	5.4 EPDO	194.1 EPDO / 100M VMT	44.2 jobs per resident	44.3 jobs per resident	182.3 adjusted users	374,312.5 thousand adj sq. ft.	11,808.5 thousand adj daily tons	5,070,070.7 adj. buffer time index	182.3 adjusted points	8.3 scaled points	14,159.8 adjusted jobs & pop.
Normalized Measure Value (0-100)	16.3	7.8	1.6	1.0	1.7	1.7	1.2	1.3	0.7	0.4	1.1	16.2	12.5
Measure Weight (% of Factor)	50%	50%	50%	50%	60%	20%	20%	60%	20%	20%	50%	50%	100%
Factor Value	12.1		1.3		1.6			1.0			8.6		12.5
Factor Weight (% of Project Score)	45%		5%		15%			5%			10%		20%
Weighted Factor Value	5.4		0.1		0.2			0.1			0.9		2.5
Project Benefit	9.1												
SMART SCALE Cost	\$4,888,655												
SMART SCALE Score (Project Benefit per \$10M SMART SCALE Cost)	<b>18.7</b>												

# PROJECT SCORECARD

For more information on how to read a scorecard, click here.

Lafayette Blvd and Harrison Road

App Id: 1141

Lafayette Blvd and Harrison Road intersection improvements

Project Location..... Spotsylvania County  
 SMART SCALE Area Type..... A  
 Submitting Entity..... Spotsylvania County  
 Preliminary Engineering..... Not Started  
 Right of Way..... Not Started  
 Construction..... Not Started  
 Expenditures to Date..... N/A  
 Key Fund Sources..... N/A  
 Administered By..... VDOT  
 Eligible Funding Program(s)..... Both  
 VTrans Need..... Fredericksburg Regional Network  
 ( Click for details )



<h1>33.5</h1> <p>SMART SCALE SCORE</p>	<h2>#28</h2> <p>OF 404 STATEWIDE</p>
	<h2>#2</h2> <p>OF 25 DISTRICTWIDE</p>

SMART SCALE Requested Funds..... **\$1,200,000**  
 Total Project Cost..... **\$1,200,000**  
 Project Benefit..... **3.6**  
 Project Benefit / Total Cost..... **29.7**

Factor	Congestion Mitigation		Safety		Accessibility			Economic Development			Environment		Land Use
	Increase in Peak Period Person Throughput	Reduction in Peak Period Delay	Reduction in Fatal and Injury Crashes	Reduction in Fatal and Injury Crash Rate	Increase in Access to Jobs	Increase in Access to Jobs for Disadvantaged Populations	Increase in Access to Multimodal Travel Choices	Square Feet of Commercial/Industrial Development Supported	Tons of Goods Impacted	Improvement to Travel Time Reliability	Potential to Improve Air Quality	Other Factor Values Scaled by Potential Acreage Impacted	Support of Transportation-Efficient Land Development
Measure Value	19.7 persons	0.0 person hrs.	1.2 EPDO	142.3 EPDO / 100M VMT	0.0 jobs per resident	0.0 jobs per resident	29.6 adjusted users	3,786,030.0 thousand adj sq. ft.	0.0 thousand adj daily tons	804,636.7 adj. buffer time index	59.1 adjusted points	2.6 scaled points	15,906.2 adjusted jobs & pop.
Normalized Measure Value (0-100)	0.2	0.0	0.4	0.7	0.0	0.0	0.2	13.4	0.0	0.1	0.3	5.1	14.1
Measure Weight (% of Factor)	50%	50%	50%	50%	60%	20%	20%	60%	20%	20%	50%	50%	100%
Factor Value	0.1		0.5		0.0			8.1			2.7		14.1
Factor Weight (% of Project Score)	45%		5%		15%			5%			10%		20%
Weighted Factor Value	0.0		0.0		0.0			0.4			0.3		2.8
Project Benefit	3.6												
SMART SCALE Cost	\$1,063,000												
SMART SCALE Score (Project Benefit per \$10M SMART SCALE Cost)	<b>33.5</b>												



# PROJECT SCORECARD

For more information on how to read a scorecard, click here.

Widening of Smith Station Road at Courthouse Road

App Id: 1144

Intersection improvement and widening of Smith Station Road at Courthouse Road will provide turn lanes.

Project Location..... Spotsylvania County  
 SMART SCALE Area Type..... A  
 Submitting Entity..... Spotsylvania County  
 Preliminary Engineering..... Not Started  
 Right of Way..... Not Started  
 Construction..... Not Started  
 Expenditures to Date..... N/A  
 Key Fund Sources..... N/A  
 Administered By..... VDOT  
 Eligible Funding Program(s)..... Both  
 VTrans Need..... Fredericksburg Regional Network  
 ( Click for details )



<h1>1.0</h1> <p>SMART SCALE SCORE</p>	<h2>#280</h2> <p>OF 404 STATEWIDE</p>
	<h2>#17</h2> <p>OF 25 DISTRICTWIDE</p>

SMART SCALE Requested Funds..... **\$4,975,000**  
 Total Project Cost..... **\$4,975,000**  
 Project Benefit..... **0.5**  
 Project Benefit / Total Cost..... **1.0**

Factor	Congestion Mitigation		Safety		Accessibility			Economic Development			Environment		Land Use
	Increase in Peak Period Person Throughput	Reduction in Peak Period Delay	Reduction in Fatal and Injury Crashes	Reduction in Fatal and Injury Crash Rate	Increase in Access to Jobs	Increase in Access to Jobs for Disadvantaged Populations	Increase in Access to Multimodal Travel Choices	Square Feet of Commercial/Industrial Development Supported	Tons of Goods Impacted	Improvement to Travel Time Reliability	Potential to Improve Air Quality	Other Factor Values Scaled by Potential Acreage Impacted	Support of Transportation-Efficient Land Development
Measure Value	62.6 persons	20.1 person hrs.	8.4 EPDO	258.0 EPDO / 100M VMT	6.1 jobs per resident	6.1 jobs per resident	93.9 adjusted users	73,692.0 thousand adj sq. ft.	0.0 thousand adj daily tons	3,373,906.2 adj. buffer time index	125.3 adjusted points	0.4 scaled points	0.0 adjusted jobs & pop.
Normalized Measure Value (0-100)	0.6	0.6	2.6	1.3	0.2	0.2	0.6	0.3	0.0	0.2	0.7	0.7	0.0
Measure Weight (% of Factor)	50%	50%	50%	50%	60%	20%	20%	60%	20%	20%	50%	50%	100%
Factor Value	0.6		1.9		0.3			0.2			0.7		0.0
Factor Weight (% of Project Score)	45%		5%		15%			5%			10%		20%
Weighted Factor Value	0.3		0.1		0.0			0.0			0.1		0.0
Project Benefit	0.5												
SMART SCALE Cost	\$4,975,000												
SMART SCALE Score (Project Benefit per \$10M SMART SCALE Cost)	1.0												

# PROJECT SCORECARD

For more information on how to read a scorecard, click here.

I-95 Exit 126, Route 1 Southbound onto Southpoint Parkway

App Id: 1145

I-95 Exit 126 and Route 1 widening, including turn lanes onto Southpoint Parkway and widening of Southpoint Parkway.

Project Location..... Spotsylvania County  
 SMART SCALE Area Type..... A  
 Submitting Entity..... Spotsylvania County  
 Preliminary Engineering..... Underway  
 Right of Way..... Not Started  
 Construction..... Not Started  
 Expenditures to Date..... N/A  
 Key Fund Sources..... N/A  
 Administered By..... VDOT  
 Eligible Funding Program(s)..... Both  
 VTrans Need..... Washington to North Carolina CoSS  
 ( Click for details )



<h1>7.2</h1> <p>SMART SCALE SCORE</p>	<h2>#104</h2> <p>OF 404 STATEWIDE</p>
	<h2>#6</h2> <p>OF 25 DISTRICTWIDE</p>

SMART SCALE Requested Funds..... **\$14,495,000**  
 Total Project Cost..... **\$14,495,000**  
 Project Benefit..... **9.2**  
 Project Benefit / Total Cost..... **6.3**

Factor	Congestion Mitigation		Safety		Accessibility			Economic Development			Environment		Land Use
	Increase in Peak Period Person Throughput	Reduction in Peak Period Delay	Reduction in Fatal and Injury Crashes	Reduction in Fatal and Injury Crash Rate	Increase in Access to Jobs	Increase in Access to Jobs for Disadvantaged Populations	Increase in Access to Multimodal Travel Choices	Square Feet of Commercial/Industrial Development Supported	Tons of Goods Impacted	Improvement to Travel Time Reliability	Potential to Improve Air Quality	Other Factor Values Scaled by Potential Acreage Impacted	Support of Transportation-Efficient Land Development
Measure Value	1,628.2 persons	132.1 person hrs.	8.1 EPDO	69.5 EPDO / 100M VMT	40.1 jobs per resident	40.8 jobs per resident	174.4 adjusted users	244,166.5 thousand adj sq. ft.	28,465.6 thousand adj daily tons	67,195,630.6 adj. buffer time index	650.0 adjusted points	7.7 scaled points	18,840.4 adjusted jobs & pop.
Normalized Measure Value (0-100)	16.1	4.1	2.5	0.4	1.5	1.5	1.2	0.9	1.7	4.9	3.8	14.9	16.7
Measure Weight (% of Factor)	50%	50%	50%	50%	60%	20%	20%	60%	20%	20%	50%	50%	100%
Factor Value	10.1		1.4		1.5			1.8			9.4		16.7
Factor Weight (% of Project Score)	45%		5%		15%			5%			10%		20%
Weighted Factor Value	4.5		0.1		0.2			0.1			0.9		3.3
Project Benefit	9.2												
SMART SCALE Cost	\$12,745,000												
SMART SCALE Score (Project Benefit per \$10M SMART SCALE Cost)	7.2												

# PROJECT SCORECARD

For more information on how to read a scorecard, click here.

Bridge over I95 and Widening of Harrison Rd - Salem Church Rd

App Id: 1148

This project provides two additional through lanes on Harrison Road, full bike and pedestrian connectivity from Rt 1 to Rt 639 (Salem Church Road) and further provides additional bridge length for I95 future construction HOV/HOT lanes and CD lanes.

Project Location..... Spotsylvania County  
 SMART SCALE Area Type..... A  
 Submitting Entity..... Spotsylvania County  
 Preliminary Engineering..... Not Started  
 Right of Way..... Not Started  
 Construction..... Not Started  
 Expenditures to Date..... N/A  
 Key Fund Sources..... N/A  
 Administered By..... VDOT  
 Eligible Funding Program(s)..... Both  
 VTrans Need..... Washington to North Carolina CoSS  
 ( Click for details )



<h1>0.4</h1> <p>SMART SCALE SCORE</p>	<h2>#353</h2> <p>OF 404 STATEWIDE</p>
	<h2>#22</h2> <p>OF 25 DISTRICTWIDE</p>

SMART SCALE Requested Funds..... **\$86,070,000**  
 Total Project Cost..... **\$86,070,000**  
 Project Benefit..... **3.1**  
 Project Benefit / Total Cost..... **0.4**

Factor	Congestion Mitigation		Safety		Accessibility			Economic Development			Environment		Land Use
	Increase in Peak Period Person Throughput	Reduction in Peak Period Delay	Reduction in Fatal and Injury Crashes	Reduction in Fatal and Injury Crash Rate	Increase in Access to Jobs	Increase in Access to Jobs for Disadvantaged Populations	Increase in Access to Multimodal Travel Choices	Square Feet of Commercial/Industrial Development Supported	Tons of Goods Impacted	Improvement to Travel Time Reliability	Potential to Improve Air Quality	Other Factor Values Scaled by Potential Acreage Impacted	Support of Transportation-Efficient Land Development
Measure Value	124.3 persons	24.5 person hrs.	81.4 EPDO	614.5 EPDO / 100M VMT	33.8 jobs per resident	33.9 jobs per resident	62.8 adjusted users	2,074,774.5 thousand adj sq. ft.	5,780.9 thousand adj daily tons	33,858,352.5 adj. buffer time index	83.8 adjusted points	2.4 scaled points	7,157.0 adjusted jobs & pop.
Normalized Measure Value (0-100)	1.2	0.8	24.8	3.2	1.3	1.3	0.4	7.4	0.3	2.5	0.5	4.6	6.3
Measure Weight (% of Factor)	50%	50%	50%	50%	60%	20%	20%	60%	20%	20%	50%	50%	100%
Factor Value	1.0		14.0		1.1			5.0			2.5		6.3
Factor Weight (% of Project Score)	45%		5%		15%			5%			10%		20%
Weighted Factor Value	0.4		0.7		0.2			0.2			0.3		1.3
Project Benefit	3.1												
SMART SCALE Cost	\$86,070,000												
SMART SCALE Score (Project Benefit per \$10M SMART SCALE Cost)	<b>0.4</b>												

# PROJECT SCORECARD

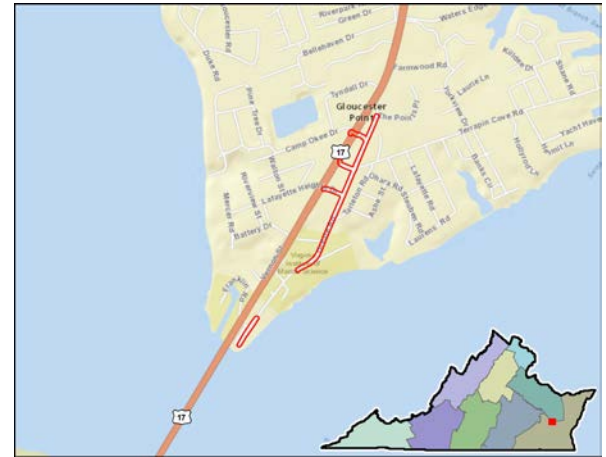
For more information on how to read a scorecard, click here.

Pedestrian Improvements on Rte 1208 - Greate Road

App Id: 1154

Pedestrian Improvements on Rte. 1208 Greate Rd and Greate Road West from the intersection with Rte. 17 to the Gloucester Point Beach and Public Boat Ramp.

Project Location..... Gloucester County  
 SMART SCALE Area Type..... D  
 Submitting Entity..... Gloucester County  
 Preliminary Engineering..... Not Started  
 Right of Way..... Not Started  
 Construction..... Not Started  
 Expenditures to Date..... N/A  
 Key Fund Sources..... N/A  
 Administered By..... VDOT  
 Eligible Funding Program(s)..... Both  
 VTrans Need..... Hampton Roads Regional Network  
 ( Click for details )



<h1>0.4</h1> <p>SMART SCALE SCORE</p>	<h2>#350</h2> <p>OF 404 STATEWIDE</p>
	<h2>#21</h2> <p>OF 25 DISTRICTWIDE</p>

SMART SCALE Requested Funds..... **\$2,120,000**  
 Total Project Cost..... **\$2,120,000**  
 Project Benefit..... **0.1**  
 Project Benefit / Total Cost..... **0.4**

Factor	Congestion Mitigation		Safety		Accessibility			Economic Development			Environment		Land Use
	Increase in Peak Period Person Throughput	Reduction in Peak Period Delay	Reduction in Fatal and Injury Crashes	Reduction in Fatal and Injury Crash Rate	Increase in Access to Jobs	Increase in Access to Jobs for Disadvantaged Populations	Increase in Access to Multimodal Travel Choices	Square Feet of Commercial/Industrial Development Supported	Tons of Goods Impacted	Improvement to Travel Time Reliability	Potential to Improve Air Quality	Other Factor Values Scaled by Potential Acreage Impacted	Support of Transportation-Efficient Land Development
Measure Value	3.6 persons	0.0 person hrs.	0.8 EPDO	42.8 EPDO / 100M VMT	1.0 jobs per resident	0.2 jobs per resident	5.5 adjusted users	0.0 thousand adj sq. ft.	0.0 thousand adj daily tons	0.0 adj. buffer time index	7.3 adjusted points	0.0 scaled points	adjusted jobs & pop.
Normalized Measure Value (0-100)	0.0	0.0	0.2	0.2	0.0	0.0	0.0	0.0	0.0	0.0	0.0	0.1	
Measure Weight (% of Factor)	50%	50%	50%	50%	60%	20%	20%	60%	20%	20%	50%	50%	N/A
Factor Value	0.0		0.2		0.0			0.0			0.1		0.0
Factor Weight (% of Project Score)	10%		30%		15%			35%			10%		N/A
Weighted Factor Value	0.0		0.1		0.0			0.0			0.0		
Project Benefit	0.1												
SMART SCALE Cost	\$2,120,000												
SMART SCALE Score (Project Benefit per \$10M SMART SCALE Cost)	<b>0.4</b>												



# PROJECT SCORECARD

For more information on how to read a scorecard, click here.

1. Stafford - Route 1/Enon Road Intersection and Roadway IMP

App Id: 1180

The project will provide a two-way left turn lane, an additional left turn lane from northbound Jefferson Davis Hwy onto Enon Rd, dedicated turn lanes at the intersection of Stafford Indians Ln (SR-9399), and 5' sidewalks along both sides of Enon Rd.

Project Location..... Stafford County  
 SMART SCALE Area Type..... A  
 Submitting Entity..... Stafford County  
 Preliminary Engineering..... Underway  
 Right of Way..... Not Started  
 Construction..... Not Started  
 Expenditures to Date..... N/A  
 Key Fund Sources..... N/A  
 Administered By..... Locality  
 Eligible Funding Program(s)..... Both  
 VTrans Need..... Washington to North Carolina CoSS  
 ( Click for details )



<h1>1.5</h1> <p>SMART SCALE SCORE</p>	<h2>#257</h2> <p>OF 404 STATEWIDE</p>
	<h2>#13</h2> <p>OF 25 DISTRICTWIDE</p>

SMART SCALE Requested Funds..... **\$10,100,000**  
 Total Project Cost..... **\$10,100,000**  
 Project Benefit..... **1.4**  
 Project Benefit / Total Cost..... **1.4**

Factor	Congestion Mitigation		Safety		Accessibility			Economic Development			Environment		Land Use
	Increase in Peak Period Person Throughput	Reduction in Peak Period Delay	Reduction in Fatal and Injury Crashes	Reduction in Fatal and Injury Crash Rate	Increase in Access to Jobs	Increase in Access to Jobs for Disadvantaged Populations	Increase in Access to Multimodal Travel Choices	Square Feet of Commercial/Industrial Development Supported	Tons of Goods Impacted	Improvement to Travel Time Reliability	Potential to Improve Air Quality	Other Factor Values Scaled by Potential Acreage Impacted	Support of Transportation-Efficient Land Development
Measure Value	9.1 persons	66.3 person hrs.	2.7 EPDO	95.9 EPDO / 100M VMT	19.8 jobs per resident	20.2 jobs per resident	45.4 adjusted users	16,875.0 thousand adj sq. ft.	11,744.7 thousand adj daily tons	3,128,530.0 adj. buffer time index	31.8 adjusted points	1.2 scaled points	3,825.2 adjusted jobs & pop.
Normalized Measure Value (0-100)	0.1	2.0	0.8	0.5	0.8	0.8	0.3	0.1	0.7	0.2	0.2	2.4	3.4
Measure Weight (% of Factor)	50%	50%	50%	50%	60%	20%	20%	60%	20%	20%	50%	50%	100%
Factor Value	1.1		0.7		0.7			0.2			1.3		3.4
Factor Weight (% of Project Score)	45%		5%		15%			5%			10%		20%
Weighted Factor Value	0.5		0.0		0.1			0.0			0.1		0.7
Project Benefit	1.4												
SMART SCALE Cost	\$9,698,532												
SMART SCALE Score (Project Benefit per \$10M SMART SCALE Cost)	1.5												

# PROJECT SCORECARD

For more information on how to read a scorecard, click here.

2. Stafford - Rt.1/Eskimo Hill Rd/American Legion Rd INT IMP

App Id: 1192

Project will add dedicated left turn lanes along Eskimo Hill Road and American Legion Road as well as add dedicated right turn lanes for both NB and SB Route 1.

Project Location..... Stafford County  
 SMART SCALE Area Type..... A  
 Submitting Entity..... Stafford County  
 Preliminary Engineering..... Not Started  
 Right of Way..... Not Started  
 Construction..... Not Started  
 Expenditures to Date..... N/A  
 Key Fund Sources..... N/A  
 Administered By..... VDOT  
 Eligible Funding Program(s)..... Both  
 VTrans Need..... Fredericksburg Regional Network  
 ( Click for details )



<h1 style="font-size: 2em;">0.7</h1> <p>SMART SCALE SCORE</p>	<h2 style="font-size: 1.5em;">#307</h2> <p>OF 404 STATEWIDE</p>
	<h2 style="font-size: 1.5em;">#19</h2> <p>OF 25 DISTRICTWIDE</p>

SMART SCALE Requested Funds..... **\$3,670,000**  
 Total Project Cost..... **\$3,670,000**  
 Project Benefit..... **0.2**  
 Project Benefit / Total Cost..... **0.6**

Factor	Congestion Mitigation		Safety		Accessibility			Economic Development			Environment		Land Use
	Increase in Peak Period Person Throughput	Reduction in Peak Period Delay	Reduction in Fatal and Injury Crashes	Reduction in Fatal and Injury Crash Rate	Increase in Access to Jobs	Increase in Access to Jobs for Disadvantaged Populations	Increase in Access to Multimodal Travel Choices	Square Feet of Commercial/Industrial Development Supported	Tons of Goods Impacted	Improvement to Travel Time Reliability	Potential to Improve Air Quality	Other Factor Values Scaled by Potential Acreage Impacted	Support of Transportation-Efficient Land Development
Measure Value	0.0 persons	0.2 person hrs.	0.8 EPDO	85.4 EPDO / 100M VMT	0.1 jobs per resident	0.1 jobs per resident	0.0 adjusted users	0.0 thousand adj sq. ft.	4,173.1 thousand adj daily tons	240,354.6 adj. buffer time index	0.0 adjusted points	0.2 scaled points	1,113.3 adjusted jobs & pop.
Normalized Measure Value (0-100)	0.0	0.0	0.2	0.4	0.0	0.0	0.0	0.0	0.2	0.0	0.0	0.4	1.0
Measure Weight (% of Factor)	50%	50%	50%	50%	60%	20%	20%	60%	20%	20%	50%	50%	100%
Factor Value	0.0		0.3		0.0			0.1			0.2		1.0
Factor Weight (% of Project Score)	45%		5%		15%			5%			10%		20%
Weighted Factor Value	0.0		0.0		0.0			0.0			0.0		0.2
Project Benefit	0.2												
SMART SCALE Cost	\$3,250,000												
SMART SCALE Score (Project Benefit per \$10M SMART SCALE Cost)	0.7												

# PROJECT SCORECARD

For more information on how to read a scorecard, click here.

## 3. Stafford - Butler Road Widening

App Id: 1194

Reconstruct and widen Route 218 (Butler Road) from 2 to 4 lanes. Dedicated right and left turn lanes will be added at intersecting side streets. A 5-foot sidewalk will be added on both east and west sides of Butler Road.

Project Location..... Stafford County  
 SMART SCALE Area Type..... A  
 Submitting Entity..... Stafford County  
 Preliminary Engineering..... Not Started  
 Right of Way..... Not Started  
 Construction..... Not Started  
 Expenditures to Date..... N/A  
 Key Fund Sources..... N/A  
 Administered By..... VDOT  
 Eligible Funding Program(s)..... Both  
 VTrans Need..... Fredericksburg Regional Network  
 ( Click for details )



<h1>1.2</h1> <p>SMART SCALE SCORE</p>	<h2>#271</h2> <p>OF 404 STATEWIDE</p>
	<h2>#16</h2> <p>OF 25 DISTRICTWIDE</p>

SMART SCALE Requested Funds..... **\$28,500,000**  
 Total Project Cost..... **\$28,500,000**  
 Project Benefit..... **3.1**  
 Project Benefit / Total Cost..... **1.1**

Factor	Congestion Mitigation		Safety		Accessibility			Economic Development			Environment		Land Use
	Increase in Peak Period Person Throughput	Reduction in Peak Period Delay	Reduction in Fatal and Injury Crashes	Reduction in Fatal and Injury Crash Rate	Increase in Access to Jobs	Increase in Access to Jobs for Disadvantaged Populations	Increase in Access to Multimodal Travel Choices	Square Feet of Commercial/Industrial Development Supported	Tons of Goods Impacted	Improvement to Travel Time Reliability	Potential to Improve Air Quality	Other Factor Values Scaled by Potential Acreage Impacted	Support of Transportation-Efficient Land Development
Measure Value	20.4 persons	6.8 person hrs.	57.0 EPDO	954.7 EPDO / 100M VMT	11.5 jobs per resident	11.6 jobs per resident	102.0 adjusted users	0.0 thousand adj sq. ft.	7,099.7 thousand adj daily tons	15,893,060.5 adj. buffer time index	61.2 adjusted points	2.2 scaled points	11,896.8 adjusted jobs & pop.
Normalized Measure Value (0-100)	0.2	0.2	17.3	4.9	0.4	0.4	0.7	0.0	0.4	1.2	0.4	4.3	10.5
Measure Weight (% of Factor)	50%	50%	50%	50%	60%	20%	20%	60%	20%	20%	50%	50%	100%
Factor Value	0.2		11.1		0.5			0.3			2.3		10.5
Factor Weight (% of Project Score)	45%		5%		15%			5%			10%		20%
Weighted Factor Value	0.1		0.6		0.1			0.0			0.2		2.1
Project Benefit	3.1												
SMART SCALE Cost	\$25,646,000												
SMART SCALE Score (Project Benefit per \$10M SMART SCALE Cost)	1.2												

# PROJECT SCORECARD

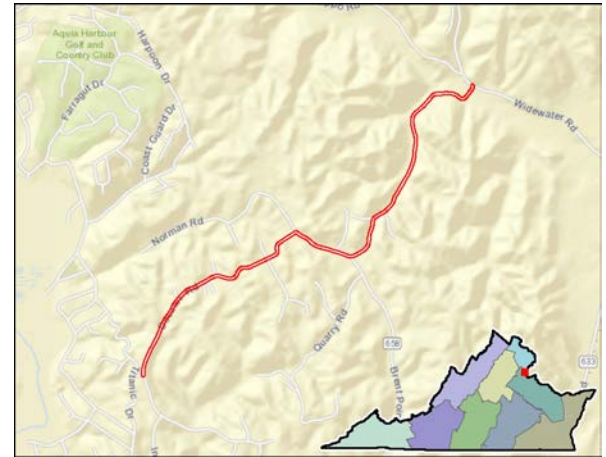
For more information on how to read a scorecard, click here.

## 4. Stafford - Decatur Road Reconstruction

App Id: 1200

Two-Lane reconstruction of Decatur Road, from Titanic Drive within the Aquia Harbour subdivision to Widewater Road (SR - 611), upgrading it to 3R VDOT standards.

Project Location..... Stafford County  
 SMART SCALE Area Type..... A  
 Submitting Entity..... Stafford County  
 Preliminary Engineering..... Not Started  
 Right of Way..... Not Started  
 Construction..... Not Started  
 Expenditures to Date..... N/A  
 Key Fund Sources..... N/A  
 Administered By..... VDOT  
 Eligible Funding Program(s)..... Both  
 VTrans Need..... Fredericksburg Regional Network  
 ( Click for details )



<h1>0.2</h1> <p>SMART SCALE SCORE</p>	<h2>#374</h2> <p>OF 404 STATEWIDE</p>
	<h2>#24</h2> <p>OF 25 DISTRICTWIDE</p>

SMART SCALE Requested Funds..... **\$15,500,000**  
 Total Project Cost..... **\$15,500,000**  
 Project Benefit..... **0.3**  
 Project Benefit / Total Cost..... **0.2**

Factor	Congestion Mitigation		Safety		Accessibility			Economic Development			Environment		Land Use
	Increase in Peak Period Person Throughput	Reduction in Peak Period Delay	Reduction in Fatal and Injury Crashes	Reduction in Fatal and Injury Crash Rate	Increase in Access to Jobs	Increase in Access to Jobs for Disadvantaged Populations	Increase in Access to Multimodal Travel Choices	Square Feet of Commercial/Industrial Development Supported	Tons of Goods Impacted	Improvement to Travel Time Reliability	Potential to Improve Air Quality	Other Factor Values Scaled by Potential Acreage Impacted	Support of Transportation-Efficient Land Development
Measure Value	0.0 persons	0.0 person hrs.	1.0 EPDO	438.2 EPDO / 100M VMT	65.8 jobs per resident	21.7 jobs per resident	0.0 adjusted users	0.0 thousand adj sq. ft.	0.0 thousand adj daily tons	0.0 adj. buffer time index	0.0 adjusted points	0.3 scaled points	0.0 adjusted jobs & pop.
Normalized Measure Value (0-100)	0.0	0.0	0.3	2.3	2.5	0.8	0.0	0.0	0.0	0.0	0.0	0.6	0.0
Measure Weight (% of Factor)	50%	50%	50%	50%	60%	20%	20%	60%	20%	20%	50%	50%	100%
Factor Value	0.0		1.3		1.7			0.0			0.3		0.0
Factor Weight (% of Project Score)	45%		5%		15%			5%			10%		20%
Weighted Factor Value	0.0		0.1		0.3			0.0			0.0		0.0
Project Benefit	0.3												
SMART SCALE Cost	\$15,500,000												
SMART SCALE Score (Project Benefit per \$10M SMART SCALE Cost)	0.2												



# PROJECT SCORECARD

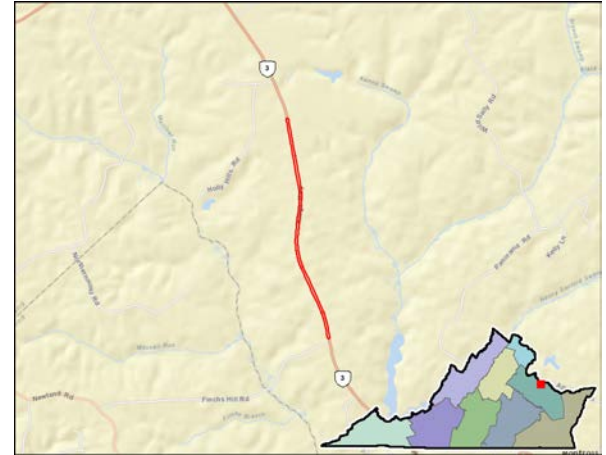
For more information on how to read a scorecard, click here.

Construct Passing Lanes on Route 3 near Lerty

App Id: 1211

Construction of a set of passing lanes on Route 3 between Route 214 (Lerty) and Montross. The additional lane would alternate directions so that traffic headed east and west would have a reasonable opportunity to pass.

Project Location..... Westmoreland County  
 SMART SCALE Area Type..... D  
 Submitting Entity..... Westmoreland County  
 Preliminary Engineering..... Not Started  
 Right of Way..... Not Started  
 Construction..... Not Started  
 Expenditures to Date..... N/A  
 Key Fund Sources..... N/A  
 Administered By..... VDOT  
 Eligible Funding Program(s)..... District Grant  
 VTrans Need..... Safety: Geometric Issue  
 ( Click for details )



<h1>0.2</h1> <p>SMART SCALE SCORE</p>	<h2>#375</h2> <p>OF 404 STATEWIDE</p>
	<h2>#25</h2> <p>OF 25 DISTRICTWIDE</p>

SMART SCALE Requested Funds..... **\$14,700,000**  
 Total Project Cost..... **\$14,700,000**  
 Project Benefit..... **0.3**  
 Project Benefit / Total Cost..... **0.2**

Factor	Congestion Mitigation		Safety		Accessibility			Economic Development			Environment		Land Use
	Increase in Peak Period Person Throughput	Reduction in Peak Period Delay	Reduction in Fatal and Injury Crashes	Reduction in Fatal and Injury Crash Rate	Increase in Access to Jobs	Increase in Access to Jobs for Disadvantaged Populations	Increase in Access to Multimodal Travel Choices	Square Feet of Commercial/Industrial Development Supported	Tons of Goods Impacted	Improvement to Travel Time Reliability	Potential to Improve Air Quality	Other Factor Values Scaled by Potential Acreage Impacted	Support of Transportation-Efficient Land Development
Measure Value	0.0 persons	0.0 person hrs.	4.0 EPDO	124.6 EPDO / 100M VMT	0.3 jobs per resident	0.3 jobs per resident	0.0 adjusted users	0.0 thousand adj sq. ft.	3,823.1 thousand adj daily tons	386,497.5 adj. buffer time index	0.0 adjusted points	0.3 scaled points	adjusted jobs & pop.
Normalized Measure Value (0-100)	0.0	0.0	1.2	0.6	0.0	0.0	0.0	0.0	0.2	0.0	0.0	0.5	
Measure Weight (% of Factor)	50%	50%	50%	50%	60%	20%	20%	60%	20%	20%	50%	50%	N/A
Factor Value	0.0		0.9		0.0			0.1			0.3		0.0
Factor Weight (% of Project Score)	10%		30%		15%			35%			10%		N/A
Weighted Factor Value	0.0		0.3		0.0			0.0			0.0		
Project Benefit	0.3												
SMART SCALE Cost	\$14,700,000												
SMART SCALE Score (Project Benefit per \$10M SMART SCALE Cost)	<b>0.2</b>												

# PROJECT SCORECARD

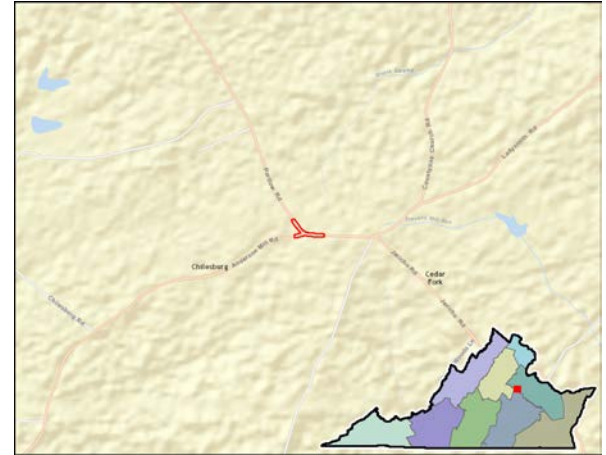
For more information on how to read a scorecard, click here.

Chilesburg-Route 738/639 Intersection Safety Improvements

App Id: 1349

Safety improvements to the intersection of Route 738/639 intersection to include reconstruction of sharp curve with 25 mph speed limit to 45 mph speed.

Project Location..... Caroline County  
 SMART SCALE Area Type..... D  
 Submitting Entity..... Caroline County  
 Preliminary Engineering..... Not Started  
 Right of Way..... Not Started  
 Construction..... Not Started  
 Expenditures to Date..... N/A  
 Key Fund Sources..... N/A  
 Administered By..... VDOT  
 Eligible Funding Program(s)..... District Grant  
 VTrans Need..... Safety: Crash History and Geometric Issue  
 ( Click for details )



<h1>81.9</h1> <p>SMART SCALE SCORE</p>	<h2>#8</h2> <p>OF 404 STATEWIDE</p>
	<h2>#1</h2> <p>OF 25 DISTRICTWIDE</p>

SMART SCALE Requested Funds..... **\$2,110,000**  
 Total Project Cost..... **\$2,110,000**  
 Project Benefit..... **17.3**  
 Project Benefit / Total Cost..... **81.9**

Factor	Congestion Mitigation		Safety		Accessibility			Economic Development			Environment		Land Use
	Increase in Peak Period Person Throughput	Reduction in Peak Period Delay	Reduction in Fatal and Injury Crashes	Reduction in Fatal and Injury Crash Rate	Increase in Access to Jobs	Increase in Access to Jobs for Disadvantaged Populations	Increase in Access to Multimodal Travel Choices	Square Feet of Commercial/Industrial Development Supported	Tons of Goods Impacted	Improvement to Travel Time Reliability	Potential to Improve Air Quality	Other Factor Values Scaled by Potential Acreage Impacted	Support of Transportation-Efficient Land Development
Measure Value	0.0 persons	0.0 person hrs.	35.4 EPDO	18,303.1 EPDO / 100M VMT	0.1 jobs per resident	0.1 jobs per resident	0.0 adjusted users	0.0 thousand adj sq. ft.	0.0 thousand adj daily tons	26,323.1 adj. buffer time index	0.0 adjusted points	15.0 scaled points	adjusted jobs & pop.
Normalized Measure Value (0-100)	0.0	0.0	10.8	94.8	0.0	0.0	0.0	0.0	0.0	0.0	0.0	29.2	
Measure Weight (% of Factor)	50%	50%	50%	50%	60%	20%	20%	60%	20%	20%	50%	50%	N/A
Factor Value	0.0		52.8		0.0			0.0			14.6		0.0
Factor Weight (% of Project Score)	10%		30%		15%			35%			10%		N/A
Weighted Factor Value	0.0		15.8		0.0			0.0			1.5		
Project Benefit	17.3												
SMART SCALE Cost	\$2,110,000												
SMART SCALE Score (Project Benefit per \$10M SMART SCALE Cost)	<b>81.9</b>												

# PROJECT SCORECARD

For more information on how to read a scorecard, click here.

New Commuter Parking Lot for Route 3 East (Stafford)

App Id: 1366

To construct a new 300 space commuter parking lot for Route 3 East (Stafford)

Project Location..... Stafford County  
 SMART SCALE Area Type..... A  
 Submitting Entity..... George Washington Regional Commission  
 Preliminary Engineering..... Not Started  
 Right of Way..... Not Started  
 Construction..... Not Started  
 Expenditures to Date..... N/A  
 Key Fund Sources..... N/A  
 Administered By..... VDOT  
 Eligible Funding Program(s)..... High Priority  
 VTrans Need..... Coastal Corridor CoSS  
 ( Click for details )



<h1>1.9</h1> <p>SMART SCALE SCORE</p>	<h2>#235</h2> <p>OF 404 STATEWIDE</p>
	<h2>#12</h2> <p>OF 25 DISTRICTWIDE</p>

SMART SCALE Requested Funds..... **\$6,750,000**  
 Total Project Cost..... **\$6,750,000**  
 Project Benefit..... **0.9**  
 Project Benefit / Total Cost..... **1.4**

Factor	Congestion Mitigation		Safety		Accessibility			Economic Development			Environment		Land Use
	Increase in Peak Period Person Throughput	Reduction in Peak Period Delay	Reduction in Fatal and Injury Crashes	Reduction in Fatal and Injury Crash Rate	Increase in Access to Jobs	Increase in Access to Jobs for Disadvantaged Populations	Increase in Access to Multimodal Travel Choices	Square Feet of Commercial/Industrial Development Supported	Tons of Goods Impacted	Improvement to Travel Time Reliability	Potential to Improve Air Quality	Other Factor Values Scaled by Potential Acreage Impacted	Support of Transportation-Efficient Land Development
Measure Value	46.8 persons	19.6 person hrs.	6.5 EPDO	1.1 EPDO / 100M VMT	20.5 jobs per resident	20.7 jobs per resident	234.0 adjusted users	0.0 thousand adj sq. ft.	3,410.7 thousand adj daily tons	0.0 adj. buffer time index	1,445.8 adjusted points	0.8 scaled points	0.0 adjusted jobs & pop.
Normalized Measure Value (0-100)	0.5	0.6	2.0	0.0	0.8	0.8	1.6	0.0	0.2	0.0	8.4	1.5	0.0
Measure Weight (% of Factor)	50%	50%	50%	50%	60%	20%	20%	60%	20%	20%	50%	50%	100%
Factor Value	0.5		1.0		0.9			0.0			5.0		0.0
Factor Weight (% of Project Score)	45%		5%		15%			5%			10%		20%
Weighted Factor Value	0.2		0.0		0.1			0.0			0.5		0.0
Project Benefit	0.9												
SMART SCALE Cost	\$4,983,170												
SMART SCALE Score (Project Benefit per \$10M SMART SCALE Cost)	<b>1.9</b>												

# PROJECT SCORECARD

For more information on how to read a scorecard, click here.

Twin Lake-Kensington Bike/Ped Connector

App Id: 1382

To extend the planned Lafayette Blvd Bike/Ped trail and provide a connection to the VCR trail from Springwood Dr.

Project Location..... Fredericksburg  
 SMART SCALE Area Type..... A  
 Submitting Entity..... George Washington Regional Commission  
 Preliminary Engineering..... Not Started  
 Right of Way..... Not Started  
 Construction..... Not Started  
 Expenditures to Date..... N/A  
 Key Fund Sources..... N/A  
 Administered By..... VDOT  
 Eligible Funding Program(s)..... High Priority  
 VTrans Need..... Washington to North Carolina CoSS  
 ( Click for details )



<h1>27.0</h1> <p>SMART SCALE SCORE</p>	<h2>#41</h2> <p>OF 404 STATEWIDE</p>
	<h2>#3</h2> <p>OF 25 DISTRICTWIDE</p>

SMART SCALE Requested Funds..... **\$1,981,550**  
 Total Project Cost..... **\$1,981,550**  
 Project Benefit..... **4.0**  
 Project Benefit / Total Cost..... **20.2**

Factor	Congestion Mitigation		Safety		Accessibility			Economic Development			Environment		Land Use
	Increase in Peak Period Person Throughput	Reduction in Peak Period Delay	Reduction in Fatal and Injury Crashes	Reduction in Fatal and Injury Crash Rate	Increase in Access to Jobs	Increase in Access to Jobs for Disadvantaged Populations	Increase in Access to Multimodal Travel Choices	Square Feet of Commercial/Industrial Development Supported	Tons of Goods Impacted	Improvement to Travel Time Reliability	Potential to Improve Air Quality	Other Factor Values Scaled by Potential Acreage Impacted	Support of Transportation-Efficient Land Development
Measure Value	31.4 persons	0.0 person hrs.	11.6 EPDO	450.4 EPDO / 100M VMT	0.0 jobs per resident	0.0 jobs per resident	94.2 adjusted users	27,131.6 thousand adj sq. ft.	0.0 thousand adj daily tons	0.0 adj. buffer time index	125.7 adjusted points	2.8 scaled points	19,514.7 adjusted jobs & pop.
Normalized Measure Value (0-100)	0.3	0.0	3.5	2.3	0.0	0.0	0.6	0.1	0.0	0.0	0.7	5.5	17.2
Measure Weight (% of Factor)	50%	50%	50%	50%	60%	20%	20%	60%	20%	20%	50%	50%	100%
Factor Value	0.2		2.9		0.1			0.1			3.1		17.2
Factor Weight (% of Project Score)	45%		5%		15%			5%			10%		20%
Weighted Factor Value	0.1		0.1		0.0			0.0			0.3		3.4
Project Benefit	4.0												
SMART SCALE Cost	\$1,481,550												
SMART SCALE Score (Project Benefit per \$10M SMART SCALE Cost)	27.0												



# PROJECT SCORECARD

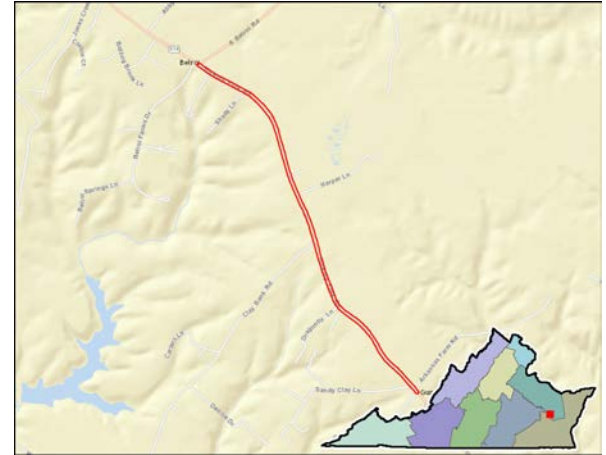
For more information on how to read a scorecard, click here.

Route 614 Reconstruction - Hickory Fork Road

App Id: 1411

This project will continue the reconstruction of Hickory Fork Road northward between Gum Fork Road (631) and Belroi Road (616).

Project Location..... Gloucester County  
 SMART SCALE Area Type..... D  
 Submitting Entity..... Gloucester County  
 Preliminary Engineering..... Not Started  
 Right of Way..... Not Started  
 Construction..... Not Started  
 Expenditures to Date..... N/A  
 Key Fund Sources..... N/A  
 Administered By..... VDOT  
 Eligible Funding Program(s)..... District Grant  
 VTrans Need..... Gloucester Court House UDA  
 ( Click for details )



<h1 style="font-size: 2em;">2.5</h1> <p>SMART SCALE SCORE</p>	<h2 style="font-size: 1.5em;">#202</h2> <p>OF 404 STATEWIDE</p>
	<h2 style="font-size: 1.5em;">#10</h2> <p>OF 25 DISTRICTWIDE</p>

SMART SCALE Requested Funds..... **\$12,556,000**  
 Total Project Cost..... **\$12,556,000**  
 Project Benefit..... **3.1**  
 Project Benefit / Total Cost..... **2.5**

Factor	Congestion Mitigation		Safety		Accessibility			Economic Development			Environment		Land Use
	Increase in Peak Period Person Throughput	Reduction in Peak Period Delay	Reduction in Fatal and Injury Crashes	Reduction in Fatal and Injury Crash Rate	Increase in Access to Jobs	Increase in Access to Jobs for Disadvantaged Populations	Increase in Access to Multimodal Travel Choices	Square Feet of Commercial/Industrial Development Supported	Tons of Goods Impacted	Improvement to Travel Time Reliability	Potential to Improve Air Quality	Other Factor Values Scaled by Potential Acreage Impacted	Support of Transportation-Efficient Land Development
Measure Value	0.0 persons	0.0 person hrs.	38.3 EPDO	1,269.3 EPDO / 100M VMT	1.2 jobs per resident	1.2 jobs per resident	0.0 adjusted users	150,000.0 thousand adj sq. ft.	0.0 thousand adj daily tons	242,279.5 adj. buffer time index	0.0 adjusted points	2.7 scaled points	adjusted jobs & pop.
Normalized Measure Value (0-100)	0.0	0.0	11.6	6.6	0.0	0.0	0.0	0.5	0.0	0.0	0.0	5.2	
Measure Weight (% of Factor)	50%	50%	50%	50%	60%	20%	20%	60%	20%	20%	50%	50%	N/A
Factor Value	0.0		9.1		0.0			0.3			2.6		0.0
Factor Weight (% of Project Score)	10%		30%		15%			35%			10%		N/A
Weighted Factor Value	0.0		2.7		0.0			0.1			0.3		
Project Benefit	3.1												
SMART SCALE Cost	\$12,556,000												
SMART SCALE Score (Project Benefit per \$10M SMART SCALE Cost)	2.5												

# PROJECT SCORECARD

For more information on how to read a scorecard, click here.

George Washington Memorial Highway - Route 17 Widening

App Id: 1412

This project will continue the widening of GW Memorial Highway (Route 17) from a 4-lane principal arterial to a 6-lane principal arterial and provide safe passage for pedestrians.

Project Location..... Gloucester County  
 SMART SCALE Area Type..... D  
 Submitting Entity..... Gloucester County  
 Preliminary Engineering..... Not Started  
 Right of Way..... Not Started  
 Construction..... Not Started  
 Expenditures to Date..... N/A  
 Key Fund Sources..... N/A  
 Administered By..... VDOT  
 Eligible Funding Program(s)..... Both  
 VTrans Need..... Hampton Roads Regional Network  
 ( Click for details )



<h1>0.6</h1> <p>SMART SCALE SCORE</p>	<h2>#330</h2> <p>OF 404 STATEWIDE</p>
	<h2>#20</h2> <p>OF 25 DISTRICTWIDE</p>

SMART SCALE Requested Funds..... **\$39,035,500**  
 Total Project Cost..... **\$39,035,500**  
 Project Benefit..... **2.2**  
 Project Benefit / Total Cost..... **0.6**

Factor	Congestion Mitigation		Safety		Accessibility			Economic Development			Environment		Land Use
	Increase in Peak Period Person Throughput	Reduction in Peak Period Delay	Reduction in Fatal and Injury Crashes	Reduction in Fatal and Injury Crash Rate	Increase in Access to Jobs	Increase in Access to Jobs for Disadvantaged Populations	Increase in Access to Multimodal Travel Choices	Square Feet of Commercial/Industrial Development Supported	Tons of Goods Impacted	Improvement to Travel Time Reliability	Potential to Improve Air Quality	Other Factor Values Scaled by Potential Acreage Impacted	Support of Transportation-Efficient Land Development
Measure Value	26.3 persons	133.8 person hrs.	26.9 EPDO	211.1 EPDO / 100M VMT	24.8 jobs per resident	24.0 jobs per resident	39.5 adjusted users	20,244.0 thousand adj sq. ft.	10,661.0 thousand adj daily tons	36,823,037.0 adj. buffer time index	52.6 adjusted points	1.7 scaled points	adjusted jobs & pop.
Normalized Measure Value (0-100)	0.3	4.1	8.2	1.1	0.9	0.9	0.3	0.1	0.6	2.7	0.3	3.3	
Measure Weight (% of Factor)	50%	50%	50%	50%	60%	20%	20%	60%	20%	20%	50%	50%	N/A
Factor Value	2.2		4.6		0.8			0.7			1.8		0.0
Factor Weight (% of Project Score)	10%		30%		15%			35%			10%		N/A
Weighted Factor Value	0.2		1.4		0.1			0.2			0.2		
Project Benefit	2.2												
SMART SCALE Cost	\$39,035,500												
SMART SCALE Score (Project Benefit per \$10M SMART SCALE Cost)	<b>0.6</b>												

# PROJECT SCORECARD

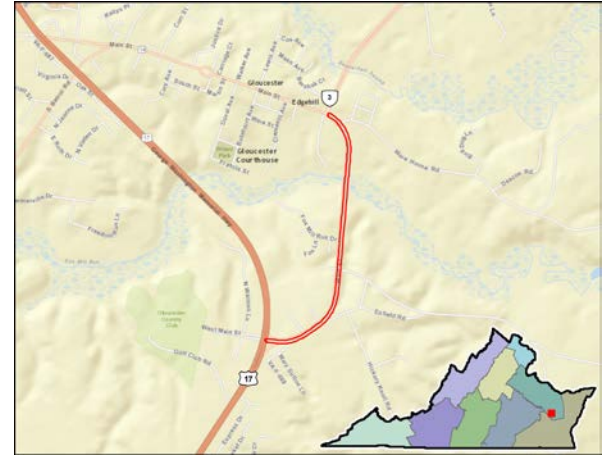
For more information on how to read a scorecard, click here.

Pedestrian/Streetscape Improvements on Rte 17B -Main St

App Id: 1443

This project will improve vehicular and pedestrian infrastructure along 17 Business (Main Street) generally aligned with the recommendations described in the Gloucester County Route 17B Corridor Planning Study.

Project Location..... Gloucester County  
 SMART SCALE Area Type..... D  
 Submitting Entity..... Gloucester County  
 Preliminary Engineering..... Not Started  
 Right of Way..... Not Started  
 Construction..... Not Started  
 Expenditures to Date..... N/A  
 Key Fund Sources..... N/A  
 Administered By..... VDOT  
 Eligible Funding Program(s)..... Both  
 VTrans Need..... Hampton Roads Regional Network  
 ( Click for details )



<h1 style="font-size: 2em;">3.6</h1> <p>SMART SCALE SCORE</p>	<h2 style="font-size: 1.5em;">#158</h2> <p>OF 404 STATEWIDE</p>
	<h2 style="font-size: 1.5em;">#7</h2> <p>OF 25 DISTRICTWIDE</p>

SMART SCALE Requested Funds..... **\$7,226,000**  
 Total Project Cost..... **\$7,226,000**  
 Project Benefit..... **2.6**  
 Project Benefit / Total Cost..... **3.6**

Factor	Congestion Mitigation		Safety		Accessibility			Economic Development			Environment		Land Use
	Increase in Peak Period Person Throughput	Reduction in Peak Period Delay	Reduction in Fatal and Injury Crashes	Reduction in Fatal and Injury Crash Rate	Increase in Access to Jobs	Increase in Access to Jobs for Disadvantaged Populations	Increase in Access to Multimodal Travel Choices	Square Feet of Commercial/Industrial Development Supported	Tons of Goods Impacted	Improvement to Travel Time Reliability	Potential to Improve Air Quality	Other Factor Values Scaled by Potential Acreage Impacted	Support of Transportation-Efficient Land Development
Measure Value	34.3 persons	1.9 person hrs.	38.1 EPDO	341.6 EPDO / 100M VMT	6.9 jobs per resident	6.7 jobs per resident	32.0 adjusted users	320,000.0 thousand adj sq. ft.	0.0 thousand adj daily tons	14,275,090.8 adj. buffer time index	42.6 adjusted points	2.2 scaled points	adjusted jobs & pop.
Normalized Measure Value (0-100)	0.3	0.1	11.6	1.8	0.3	0.3	0.2	1.1	0.0	1.0	0.2	4.2	
Measure Weight (% of Factor)	50%	50%	50%	50%	60%	20%	20%	60%	20%	20%	50%	50%	N/A
Factor Value	0.2		6.7		0.3			0.9			2.2		0.0
Factor Weight (% of Project Score)	10%		30%		15%			35%			10%		N/A
Weighted Factor Value	0.0		2.0		0.0			0.3			0.2		
Project Benefit	2.6												
SMART SCALE Cost	\$7,226,000												
SMART SCALE Score (Project Benefit per \$10M SMART SCALE Cost)	<b>3.6</b>												